



Revisions:

No.	Date	Description
9		
8		
7		
6		
5		
4		
3		
2	4/21/2014	Revised Toby Keith's patio
1	1/19/2014	Revised for City comments

Main Entry
Hardscape Plan

Scale: 1"=30'
Date: 2/10/2014
Project No.: 1401

Design: JM
Drawn: FT
Checked: JM

Release:

HARDSCAPE KEY NOTES

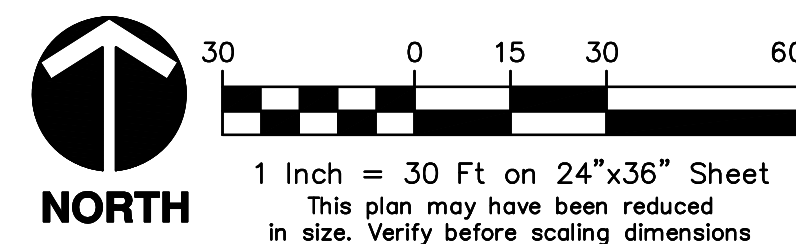
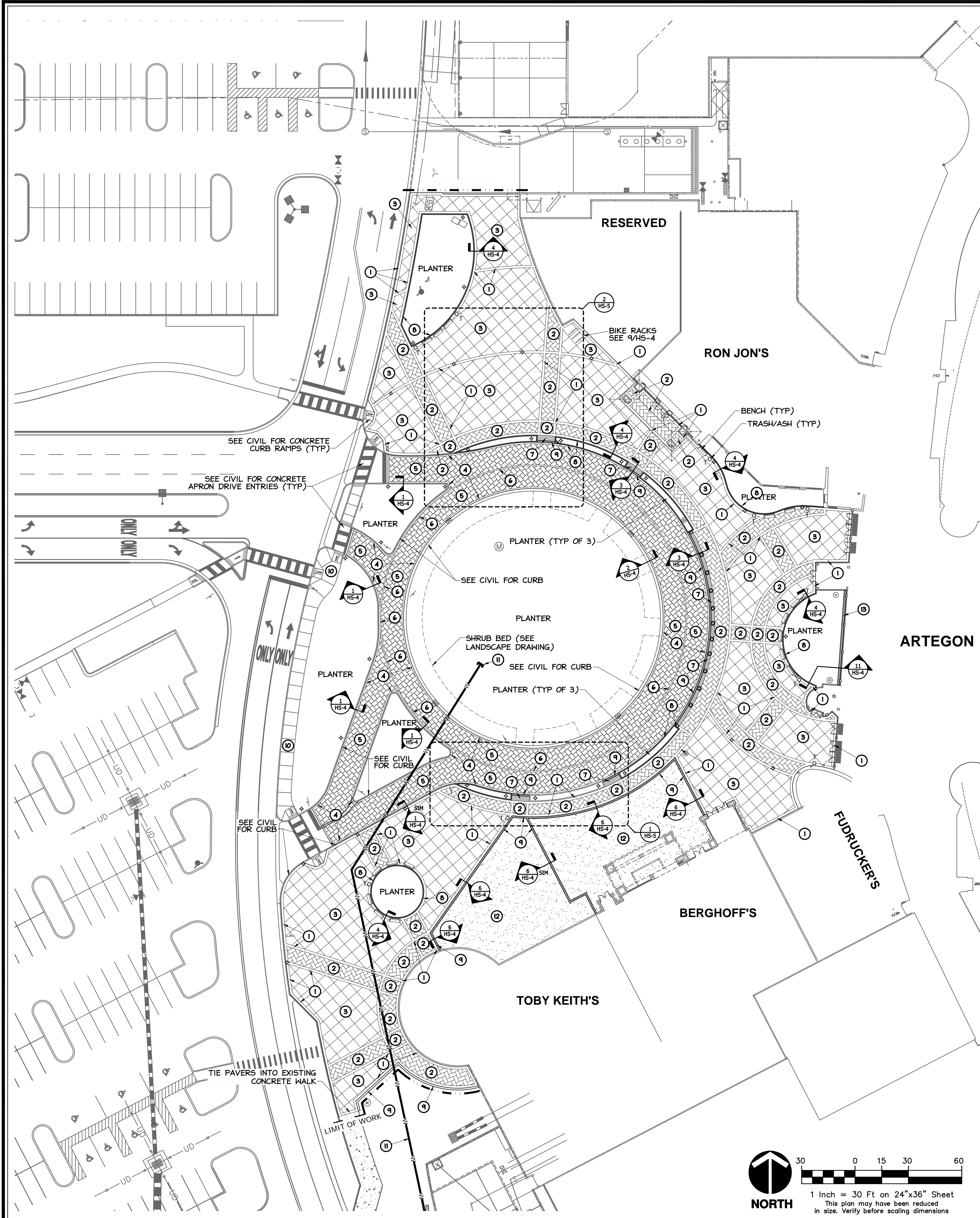
- BRICK 4" X 8" PAVER. DOUBLE SOLDIER COURSE PERIMETER BANDS. COLOR: COFFEE (SEE DETAIL 4, 5 & 6)
- BRICK 4" X 8" PAVERS. FIELD: HERRINGBONE @ 45 DEGREE ANGLE. COLOR: COFFEE (SEE DETAIL 4, 5, & 6)
- PARK PLAZA 12" X 12" PAVER. FIELD: 45 DEGREE ANGLE. COLOR: OLD CHICAGO BRICK. (SEE DETAIL 4, 5, & 6)
- MEGA OLD TOWN PAVER. SINGLE SOLDIER COURSE PERIMETER BANDS. COLOR: RUSTIC. (SEE DETAIL 1, 2, & 3)
- MEGA OLD TOWN PAVER. FIELD: MODIFIED 3 PIECE T-PATTERN/RANDOM. COLOR: RUSTIC. (SEE DETAIL 1, 2, & 3)
- MEGA OLD TOWN 6 1/2" X 9 1/2" PAVER. ROAD CENTER STRIPE. COLOR: WHITE. (SEE DETAIL 1)
- ADA 4" X 8" BRICK PAVER. BASKET WEAVE. COLOR: CHARCOAL (SEE DETAIL 1, 2, & 3)
- 6" RAISED PLANTER CURB: (SEE DETAIL 5)
- RIBBON CURB: (SEE DETAILS 3, 6)
- CONCRETE WALK: (SEE CIVIL DWGS)
- WATER LINE STUB OUT. ADD 1 1/2" POTABLE WATER LINE TO TERMINATE INSIDE ROUND-ABOUT DROP OFF PLANTING (SODDED AREA). CAP & MARK - TIE BACK TO BACK FLOW PREVENTOR FOR METER # 67560652. (SEE SHEET HS-3 FOR EXACT LOCATION)
- COLOR: CONCRETE. BROOM FINISH SCOFIELD INTEGRAL COLOR #1017 BARCELONA BROWN OR EQUAL. PROVIDE COLOR SAMPLE FOR APPROVAL.
- PLANTER BACK CURB: (SEE DETAIL 11)

NOTES:

- ALL CONCRETE UNIT PAVERS TO BE PRESURE CLEANED & SEALED PRIOR TO OPENING.
- ALL CONC. UNIT PAVERS BY TREMOR GROUP OR EQUAL. CONTACT: JOHN HALEY @ 407-402-0207.
- PROVIDE PAVER COLOR SAMPLES TO OWNER FOR FINAL APPROVAL PRIOR TO ORDERING.
- REFER TO CIVIL PLANS FOR DRAINS LOCATIONS IN HARDSCAPE AREAS.
- REFER TO CIVIL PLANS FOR GRADING, DRAINAGE, HANICAP RAMPS, ASPALT PAVING & PARKING STREET CURBS DETAILS.

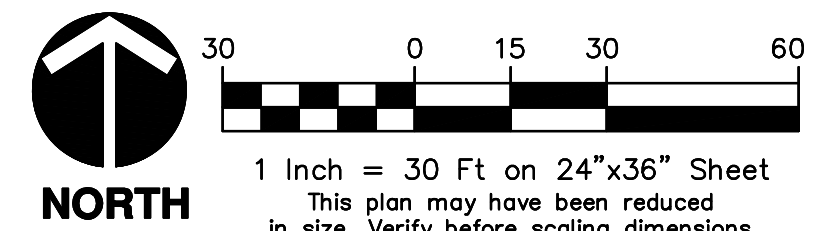
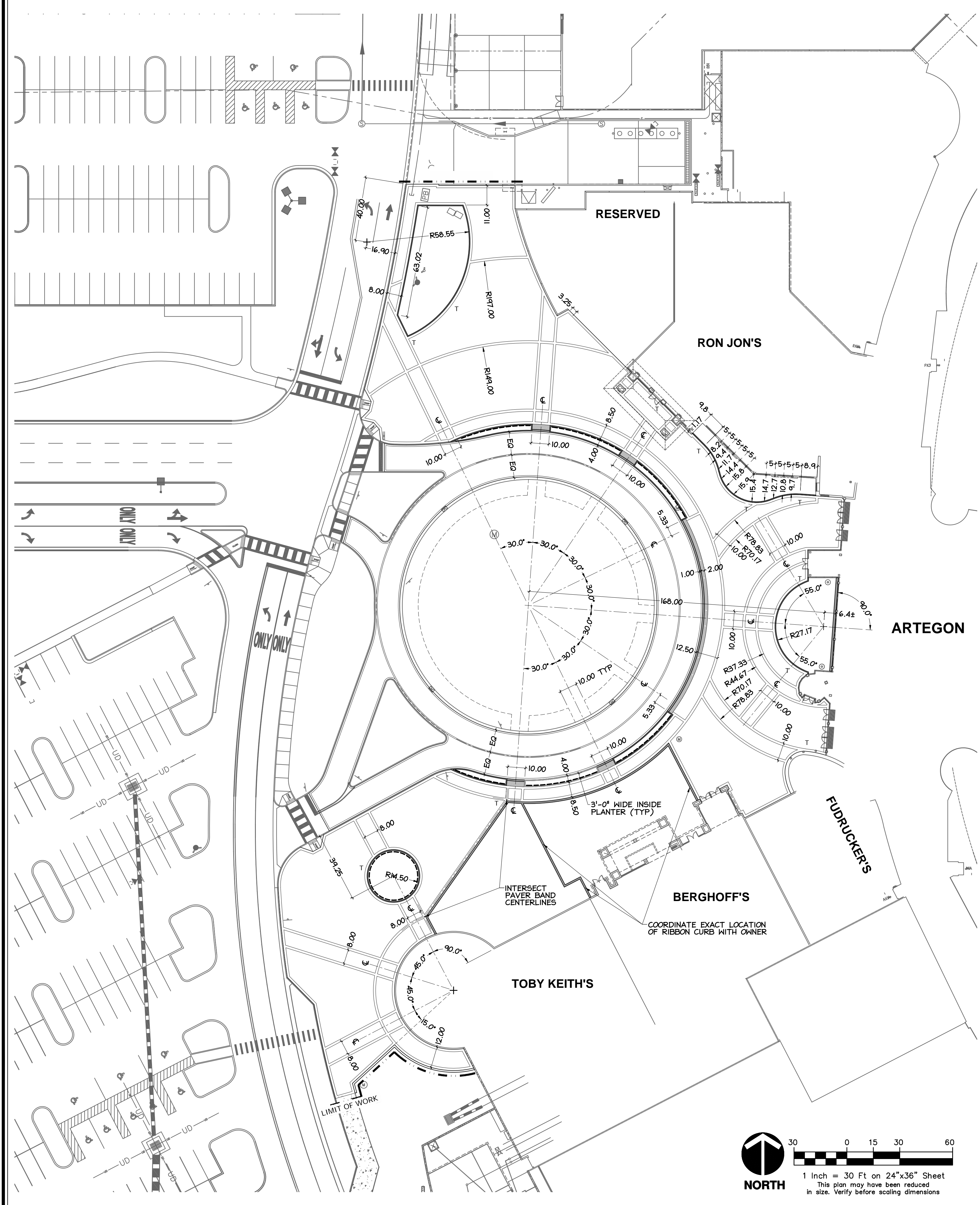
SITE LIGHTING/FURNISHINGS LEGEND (REFER TO SHEETS HS-4 FOR SITE FURNISHING/LIGHT POLE FOOTER DETAILS.)

- SYM. QTY. SPEC**
- 39 LIGHT POLE: BEACON: SET1-24NB-55LED-3K-40SQ-UNV-WHT/POLE: VAN5-S-12'-5M-TN-WHT
 - 10 BOLLARD LIGHT: KING LUMINAIRE (CONCRETE DIRECT BURIAL) SILHOUETTE: KLC-S-OAAF-V-36SSL-LED-120-WHITE-DB
 - 54 LANDSCAPE LIGHT FIXTURES: BEACON: FL-1-LED-12NB-25-3K-4X4-UNV-YK-12NA-BZT
 - 14 LANDSCAPE LIGHT INGROUND FIXTURES: GREENLEE: XIG-B-LLED-19-350-WW-UE-SP10-NB
- FOR LIGHTS ABOVE, CONTACT: VEAZY LIGHTING GROUP, TOM VEAZY @ 321-689-3450.
LIGHT SPEC ABOVE & OR EQUAL.
- 12 STRING LIGHTS WRAPPED AROUND PALM TRUNKS. TOKISTAR LIGHTING: FLWG-160-WW-HB-WP-LED-POWER SUPPLY 75" X 44" VARIABLE LENGTH. 2W/8V/PROVIDE REMOTE 120/8V DRIVER. CONTACT: 714-772-7005
 - 17 6" BENCH:
*MODEL 4008-72-AI/AI /WAVERLY STYLE BENCH/ALUMINUM/BOLD DOWN TABS/26" X 72" X 35"H/EXTERIOR METALIC POWDER COATED FINISH/WHITE-RAL 9003
 - 11 TRASH-ASH TRAY RECEPTICAL:
*MODEL 6051-T-AI/WAVERLY STYLE TRASH RECEPTACLE WITH SIDE DOOR ACCESS OPTION AND SLEEVE RAIN LID OPTION/
ASH TRAY W/HIDE-A-BUTT-LID- ALUMINUM CONSTRUCTION/BOLT DOWN TABS/24" X 24" X 32" H/ EXTERIOR POWDER COATED FINISH/WHITE- RAL 9003/GREY ASH LID RAL 7044.
 - 3 BIKE RACKS:
MODEL 8002-ST EXTERIOR POWDER COATED FINISH/WHITE- RAL 9003
- *FOR ALL SITE FURNITURINGS CONTACT: BENCHMARK DESIGN GROUP, PAUL HASER @ 904-246-5060



ALL RIGHTS RESERVED. THIS DRAWING IS THE PROPERTY OF HARRIS CIVIL ENGINEERS, LLC AND NOT BE LOANED, REPRODUCED, COPIED, OR IN ANY MANNER USED FOR ANY OTHER PROJECT WITHOUT THE WRITTEN PERMISSION OF HARRIS CIVIL ENGINEERS.

S:\Users\khairegon\Documents\A04-MP.dwg, 4/21/2014, 10:41:02, 11jones



PERMIT DOCUMENTS

Main Entry Hardscape Layout Plan

Scale: 1"=30'
 Date: 2/10/2014
 Project No.: 1401
 Design: JM
 Drawn: FT
 Checked: JM

Revisions:

No.	Date	Description
1	9/16/2014	Revised for City comments
2	4/21/2014	Revised Toby Keith's patio
3		
4		
5		
6		
7		
8		
9		

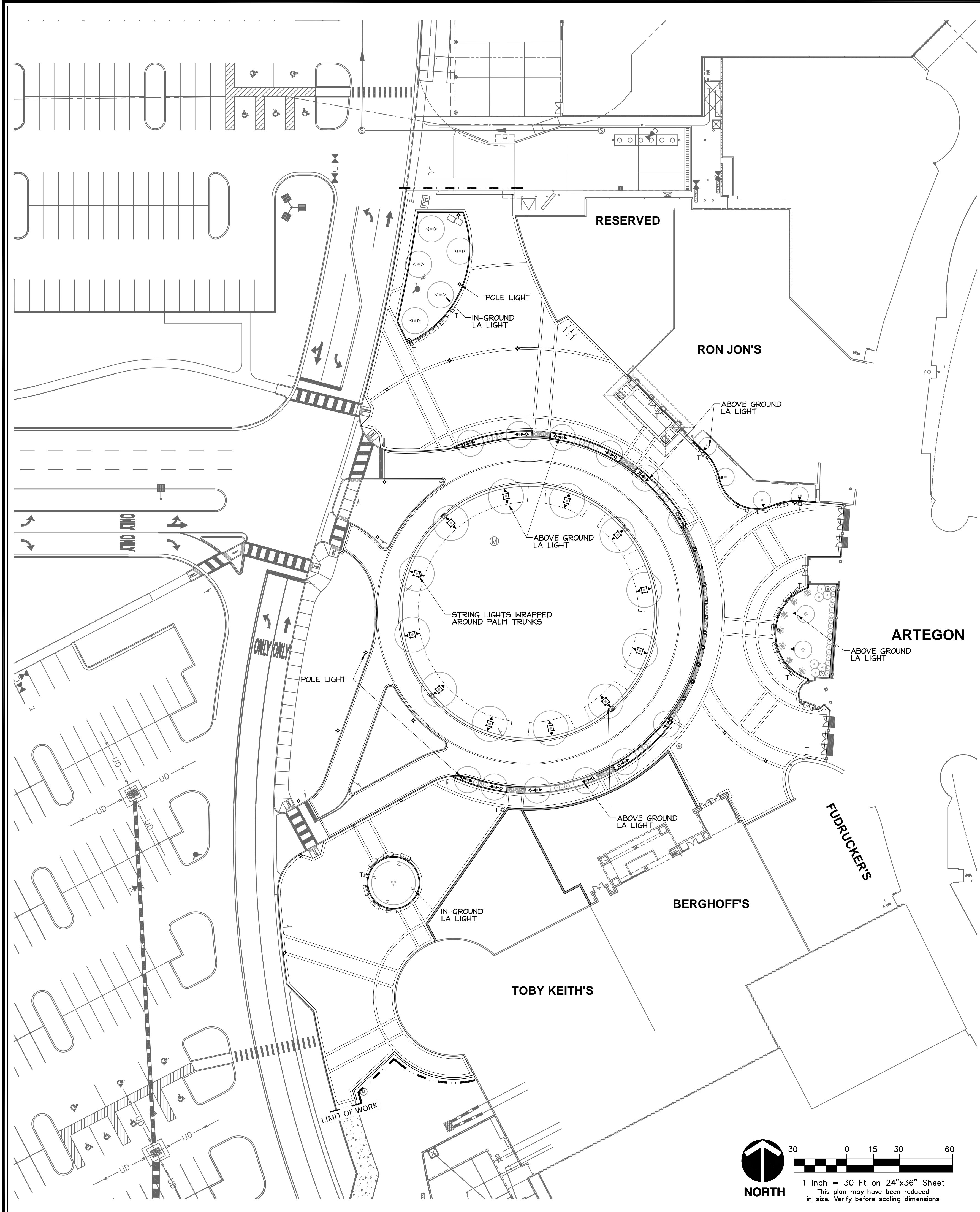
Revisions:

Artegon
 International Drive
 Orlando, Florida

HARRIS
 Harris Civil Engineers, LLC
 1200 E. Hillcrest Street
 Suite 200
 Orlando, Florida 32803
 Phone: (407) 629-4777
 (800) 595-8185
 Fax: (407) 629-7888
 www.harrisengineers.com
 EB 9814

AD
 Agora Design
 LANDSCAPE ARCHITECTURE + PLANNING
 THEMING DESIGN + GRAPHIC DESIGN
 640 South Hampton Avenue • Orlando, Florida 32803
 (407) 938-3645 • LA #752

COPYRIGHT © 2014 ALL IDEAS, ARRANGEMENTS AND PLANS INDICATED OR REPRESENTED BY THIS DRAWING ARE OWNED BY AND THE PROPERTY OF HARRIS CIVIL ENGINEERS, LLC AND WERE CREATED, DEVELOPED AND DEVELOPED FOR USE WITH THE SPECIFIC PROJECT. HARRIS CIVIL ENGINEERS RESERVES COPYRIGHTS AND OTHER RIGHTS RESTRICTING THE DRAWING TO THE ORIGINAL PROJECT OR PURPOSE FOR WHICH THEY WERE PREPARED. REPRODUCTIONS, CHANGES OR ASSIGNMENTS ARE PROHIBITED WITHOUT THE WRITTEN PERMISSION OF HARRIS CIVIL ENGINEERS.



HARDSCAPE KEY NOTES

1. BRICK 4" X 8" PAVER. DOUBLE SOLDIER COURSE PERIMETER BANDS. COLOR: COFFEE (SEE DETAIL 4, 5 & 6).
2. BRICK 4" X 8" PAVERS. FIELD: HERRINGBONE @ 45 DEGREE ANGLE. COLOR: COFFEE (SEE DETAIL 4, 5, & 6).
3. PARK PLAZA 12" X 12" PAVER. FIELD: 45 DEGREE ANGLE. COLOR: OLD CHICAGO BRICK. (SEE DETAIL 4, 5, & 6).
4. MEGA OLD TOWN PAVER. SINGLE SOLDIER COURSE PERIMETER BANDS. COLOR: RUSTIC. (SEE DETAIL 1, 2, & 3).
5. MEGA OLD TOWN PAVER. FIELD: MODIFIED 3 PIECE T -PATTERN/RANDOM. COLOR: RUSTIC. (SEE DETAIL 1, 2, & 3).
6. MEGA OLD TOWN 6 1/2" X 9 1/2" PAVER. ROAD CENTER STRIPE. COLOR: WHITE. (SEE DETAIL 1).
7. ADA 4" X 8" BRICK PAVER. BASKET WEAVE. COLOR: CHARCOAL (SEE DETAIL 1, 2, & 3).
8. 6" RAISED PLANTER CURB: (SEE DETAIL 5).
9. RIBBON CURB: (SEE DETAILS 3, 6).
10. CONCRETE WALK: (SEE CIVIL DWGS)
11. WATER LINE STUB OUT. ADD 1 1/2" POTABLE WATER LINE TO TERMINATE INSIDE ROUND-ABOUT DROP OFF PLANTING (SODDED AREA). CAP & MARK - TIE BACK TO BACK FLOW PREVENTOR FOR METER # 67560652. (SEE SHEET HS-3 FOR EXACT LOCATION)
12. COLOR CONCRETE. BROOM FINISH SCOFIELD INTEGRAL COLOR #1017 BARCELONA BROWN OR EQUAL. PROVIDE COLOR SAMPLE FOR APPROVAL.
13. PLANTER BACK CURB: (SEE DETAIL 11).

NOTES:

- ALL CONCRETE UNIT PAVERS TO BE PRESURE CLEANED & SEALED PRIOR TO OPENING.
- ALL CONC. UNIT PAVERS BY TREMRON GROUP OR EQUAL. CONTACT: JOHN HALEY @ 407-402-0207.
- PROVIDE PAVER COLOR SAMPLES TO OWNER FOR FINAL APPROVAL PRIOR TO ORDERING.
- REFER TO CIVIL PLANS FOR DRAINS LOCATIONS IN HARDSCAPE AREAS.
- REFER TO CIVIL PLANS FOR GRADING, DRAINAGE, HANICAP RAMPS, ASPALT PAVING & PARKING STREET CURBS DETAILS.

SITE LIGHTING/FURNISHINGS LEGEND (REFER TO SHEETS HS-4 FOR SITE FURNISHING/LIGHT POLE FOOTER DETAILS.)

- | | | |
|-------------|-------------|---|
| SYM. | QTY. | SPEC |
| ◆ 39 | | LIGHT POLE: BEACON: SET1-24NB-55LED-3K-40SQ-UNV-WHT/POLE: VAN5-S-12'-5M-TN-WHT. |
| ● 10 | | BOLLARD LIGHT: KING LUMINAIRE (CONCRETE DIRECT BURIAL) SILHOUETTE: KLC-S-OAAF-V-36SSL-LED-120-WHITE-DB. |
| ◆ 54 | | LANDSCAPE LIGHT FIXTURES: BEACON: FL-1-LED-12NB-25-3K-4X4-UNV-YK-12NA-EZT |
| ◁ 14 | | LANDSCAPE LIGHT INGROUND FIXTURES: GREENLEE: XIG-B-LLED-19-350-WW-UE-SP10-NB |
| | | FOR LIGHTS ABOVE, CONTACT: VEAZY LIGHTING GROUP, TOM VEAZY @ 321-689-3450.
LIGHT SPEC ABOVE & OR EQUAL. |
| □ 12 | | STRING LIGHTS WRAPPED AROUND PALM TRUNKS: TOKISTAR LIGHTING: FLWG-160-WW-HB-WP-LED-POWER SUPPLY 75" X 44" VARIABLE LENGTH. 2W/8V/PROVIDE REMOTE 120/8V DRIVER. CONTACT: 714-772-7005. |
| ▭ 17 | | 6" BENCH:
*MODEL 4008-72-AL/AL /WAVERLY STYLE BENCH/ALUMINUM/BOLD DOWN TABS/26" X 72" X 35"H/EXTERIOR METALIC POWDER COATED FINISH/WHITE-RAL 9003. |
| ⊠ 11 | | TRASH-ASH TRAY RECEPTAL:
*MODEL 6051-T-AL/WAVERLY STYLE TRASH RECEPTACLE WITH SIDE DOOR ACCESS OPTION AND SLEEVE RAIN LID OPTION/
ASH TRAY W/HIDE-A-BUTT-LID- ALUMINUM CONSTRUCTION/BOLT DOWN TABS/24" X 24" X 32" H/ EXTERIOR POWDER COATED FINISH/WHITE- RAL 9003/GREY ASH LID RAL 7044. |
| — 3 | | BIKE RACKS:
MODEL 8002-ST EXTERIOR POWDER COATED FINISH/WHITE- RAL 9003. |
- *FOR ALL SITE FURNITURINGS CONTACT: BENCHMARK DESIGN GROUP, PAUL HASER @ 904-246-5060

HARRIS
Harris Civil Engineers, LLC
1200 E. Hillcrest Street
Suite 200
Orlando, Florida 32803
Phone: (407) 629-4777
(800) 595-8185
Fax: (407) 629-7888
www.harrisengineers.com
EB 9814

AD
Agora Design
LANDSCAPE ARCHITECTURE • PLANNING
THEMING DESIGN • GRAPHIC DESIGN
640 South Hampton Avenue • Orlando, Florida 32803
(407) 898-3645 • LA #752

Artegon
International Drive
Orlando, Florida

Revisions:

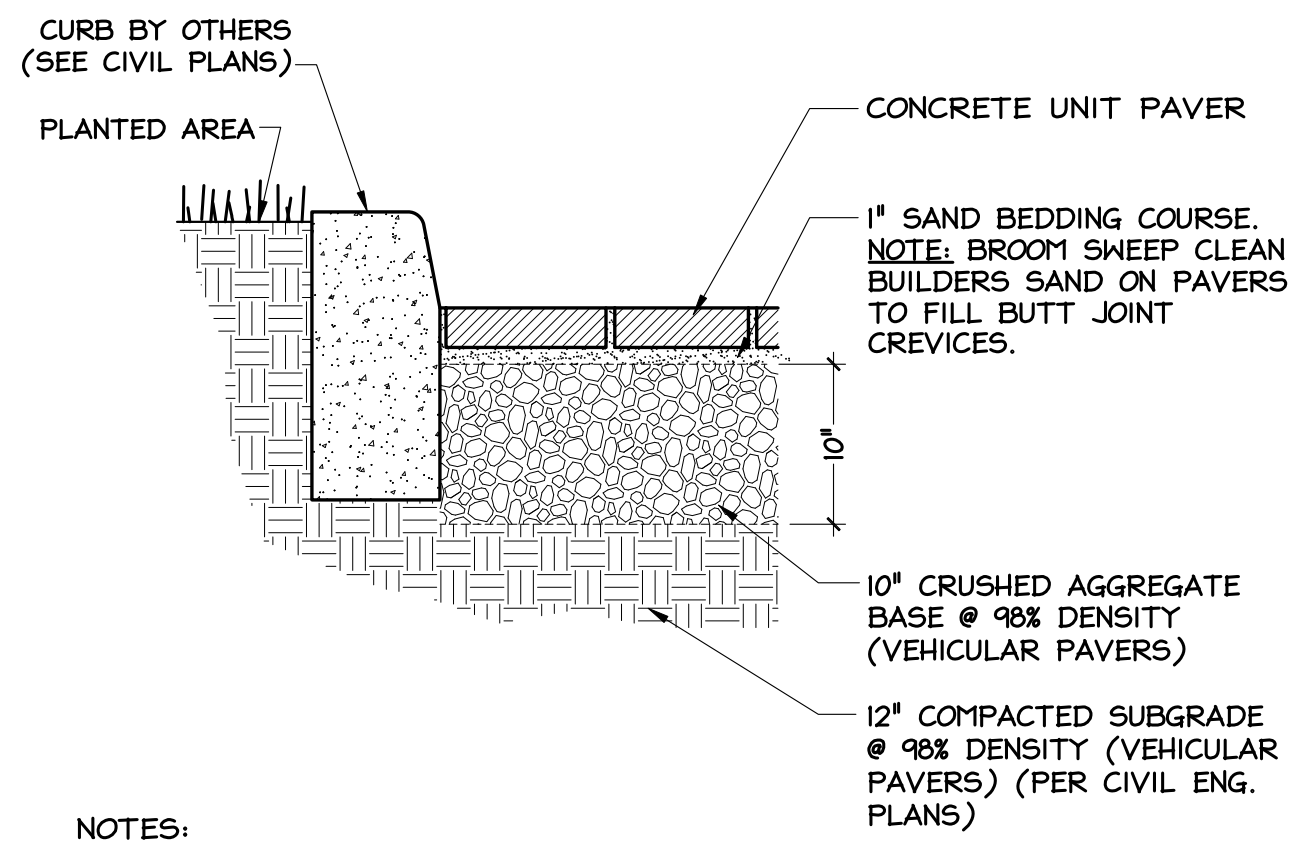
No.	Date	Description
1	10/15/2014	Revised for City comments
2	11/21/2014	Revised Toby Keith's patio
3		
4		
5		
6		
7		
8		
9		

Main Entry Site Lighting and Furnishings Plan
Scale: 1"=30'
Date: 2/10/2014
Project No.: 1401
Design: JM
Drawn: FT
Checked: JM

PERMIT DOCUMENTS
Release:
HS-3

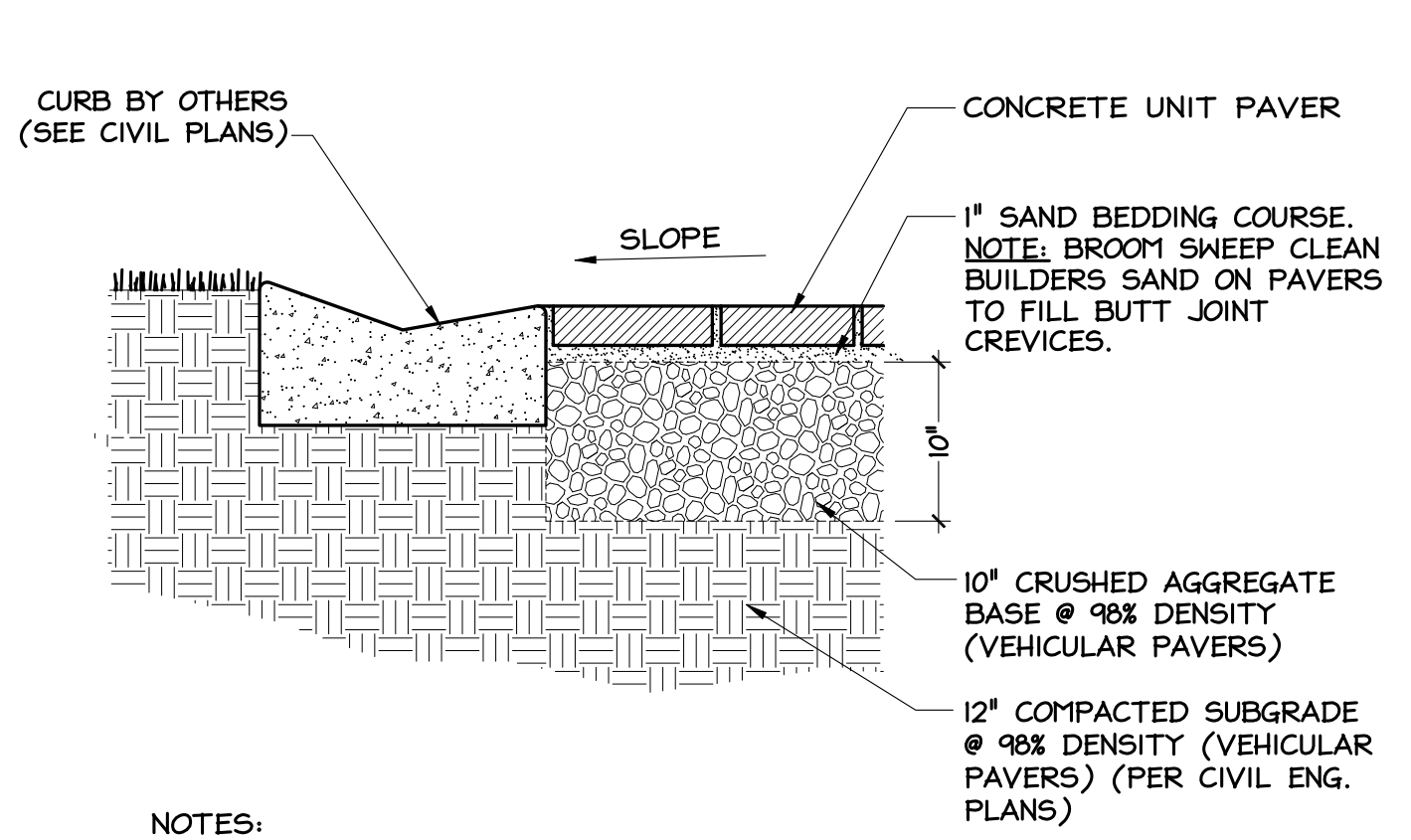
31: \Agora\Artegon\libera\04-08.dwg, 2/21/2014 10:41:04, r_jones

COPYRIGHT © 2014. ALL DESIGN ARRANGEMENTS AND PLANS INDICATED OR REPRESENTED BY THIS DRAWING ARE OWNED BY AND THE PROPERTY OF HARRIS CIVIL ENGINEERS, LLC AND WERE CREATED, DEVELOPED AND DESIGNED FOR USE WITH THE SPECIFIED PROJECT. HARRIS CIVIL ENGINEERS RESERVE COPYRIGHTS AND OTHER RIGHTS RESTRICTING THE DRAWING TO THE ORIGINAL PROJECT OR PURPOSE FOR WHICH THEY WERE PREPARED. REPRODUCTIONS, CHANGES OR ASSIGNMENTS ARE PROHIBITED WITHOUT THE WRITTEN PERMISSION OF HARRIS CIVIL ENGINEERS.



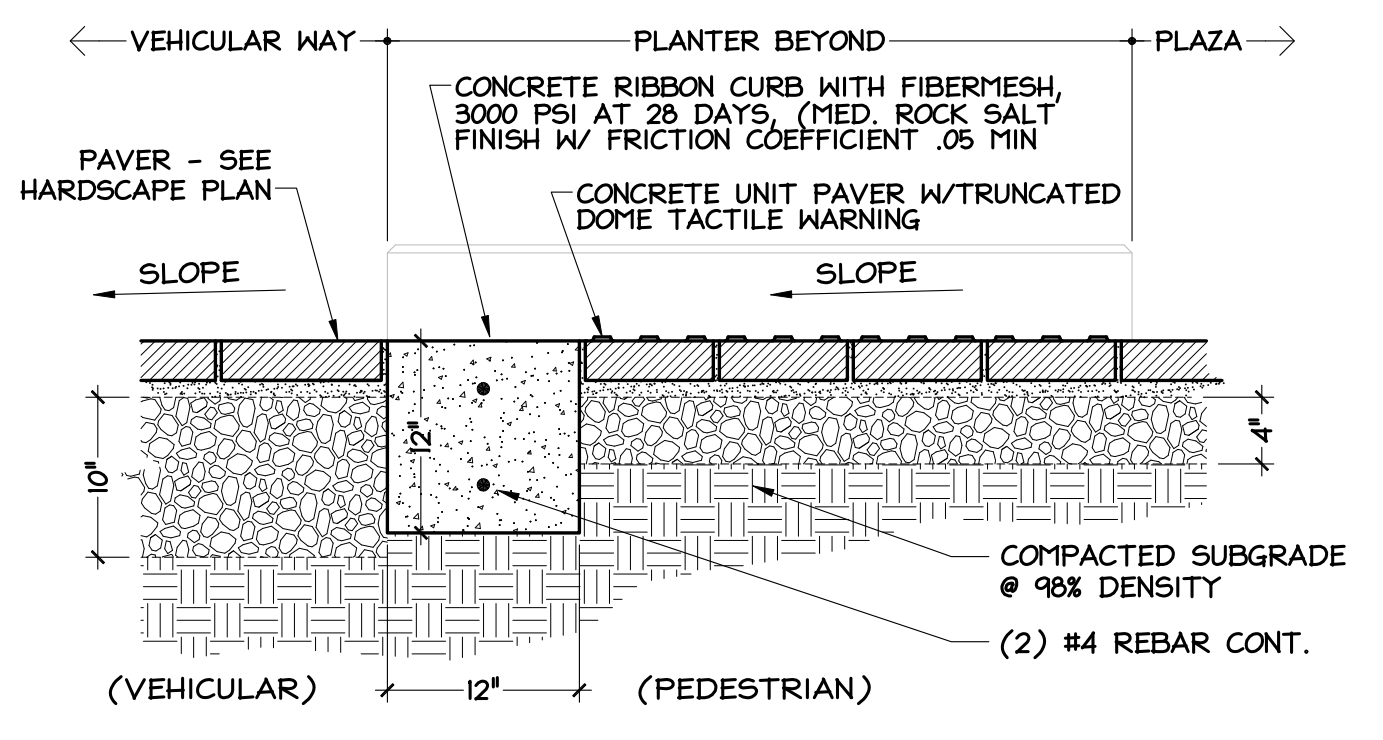
- NOTES:**
1. REFER TO PLAN FOR PAVER TYPE.
 2. ALL SURFACE UTILITIES TO BE ENCASED IN CONCRETE FOR HARDEdge FOR PAVER TO BUTT.
 3. MACHINE VIBRATE ALL PAVERS OVER SAND
 4. BROOM SWEEP CLEAN BUILDERS SAND ON PAVERS TO FILL BUTT JOINT CREVICES.
 5. IMMEDIATELY PRIOR TO BUSINESS OPENING, PRESSURE CLEAN & SEAL ALL PAVERS.
 6. PROVIDE DENSITY TESTING FOR STONE BASE & SUB-BASE

1 VEHICULAR PAVERS SECTION SCALE: 1"=1'-0"



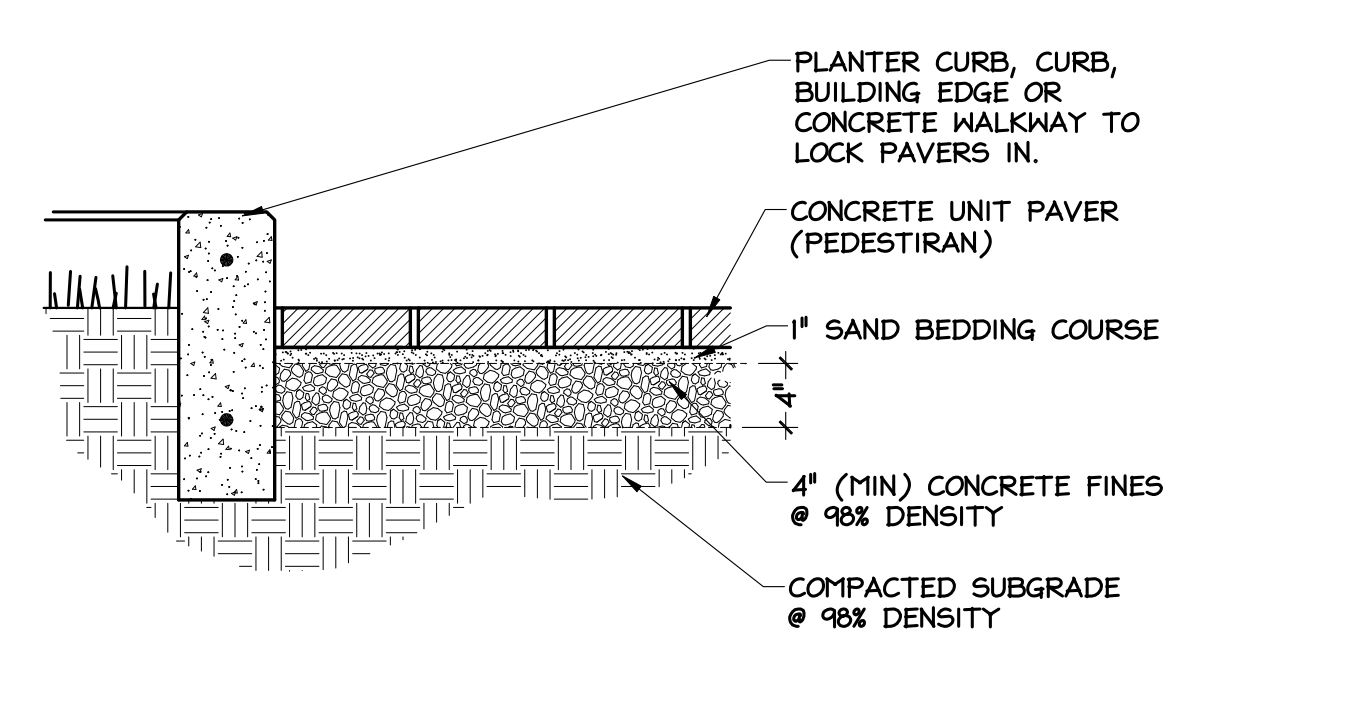
- NOTES:**
1. REFER TO PLAN FOR PAVER TYPE.
 2. ALL SURFACE UTILITIES TO BE ENCASED IN CONCRETE FOR HARDEdge FOR PAVER TO BUTT.
 3. MACHINE VIBRATE ALL PAVERS OVER SAND
 4. BROOM SWEEP CLEAN BUILDERS SAND ON PAVERS TO FILL BUTT JOINT CREVICES.
 5. IMMEDIATELY PRIOR TO BUSINESS OPENING, PRESSURE CLEAN & SEAL ALL PAVERS.
 6. PROVIDE DENSITY TESTING FOR STONE BASE & SUB-BASE

2 VEHICULAR PAVERS SECTION SCALE: 1"=1'-0"



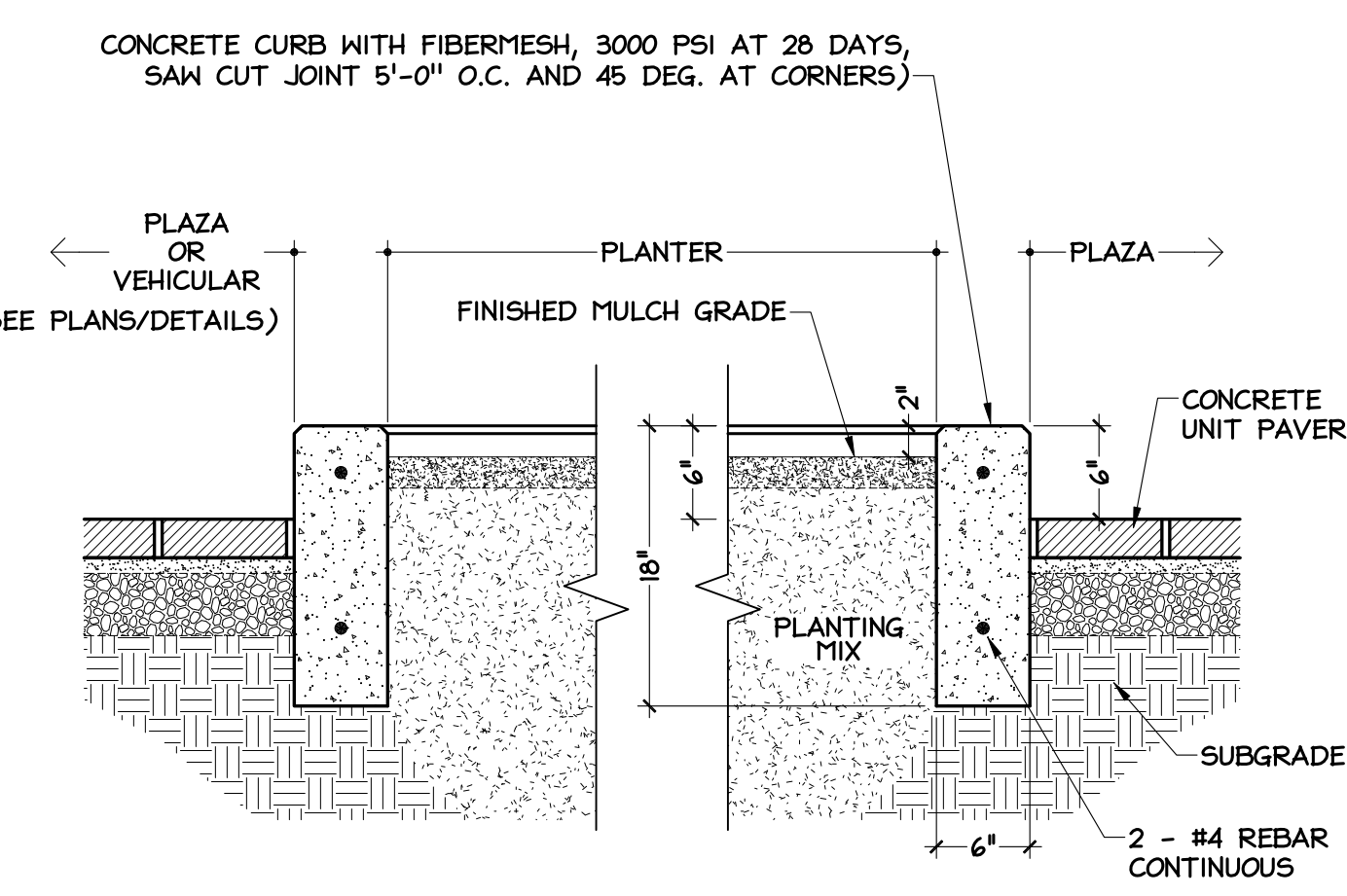
- NOTES:**
1. REFER TO PLAN FOR PAVER TYPE.
 2. ALL SURFACE UTILITIES TO BE ENCASED IN CONCRETE FOR HARDEdge FOR PAVER TO BUTT.
 3. MACHINE VIBRATE ALL PAVERS OVER SAND
 4. BROOM SWEEP CLEAN BUILDERS SAND ON PAVERS TO FILL BUTT JOINT CREVICES.
 5. IMMEDIATELY PRIOR TO BUSINESS OPENING, PRESSURE CLEAN & SEAL ALL PAVERS.
 6. PROVIDE DENSITY TESTING FOR STONE BASE & SUB-BASE

3 RIBBON CURB DETAIL @ VEHICULAR WAY SCALE: 1"=1'-0"



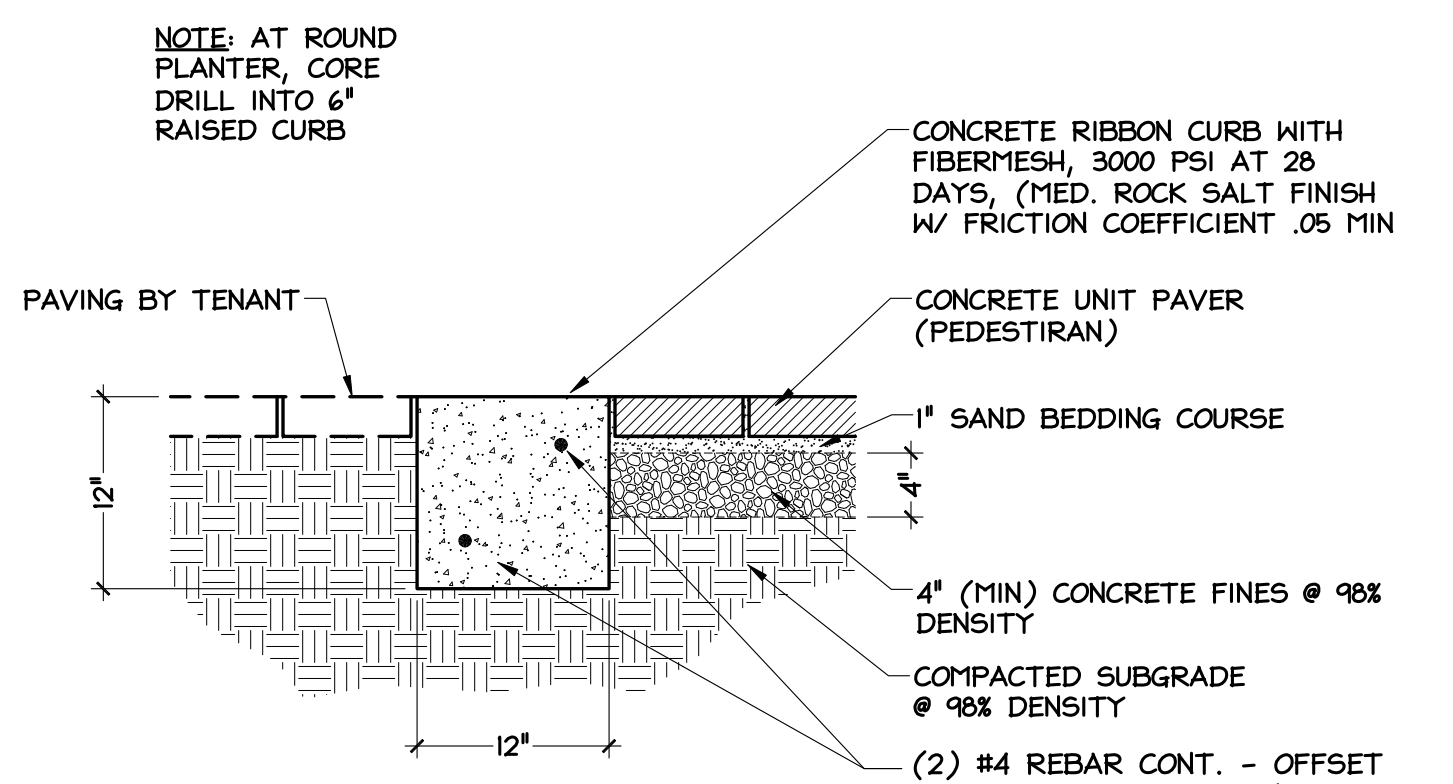
- NOTES:**
1. REFER TO PLAN FOR PAVER TYPE.
 2. ALL SURFACE UTILITIES TO BE ENCASED IN CONCRETE FOR HARDEdge FOR PAVER TO BUTT.
 3. MACHINE VIBRATE ALL PAVERS OVER SAND
 4. BROOM SWEEP CLEAN BUILDERS SAND ON PAVERS TO FILL BUTT JOINT CREVICES.
 5. IMMEDIATELY PRIOR TO BUSINESS OPENING, PRESSURE CLEAN & SEAL ALL PAVERS.
 6. PROVIDE DENSITY TESTING FOR STONE BASE & SUB-BASE

4 PEDESTRIAN PAVER SECTION SCALE: 1"=1'-0"



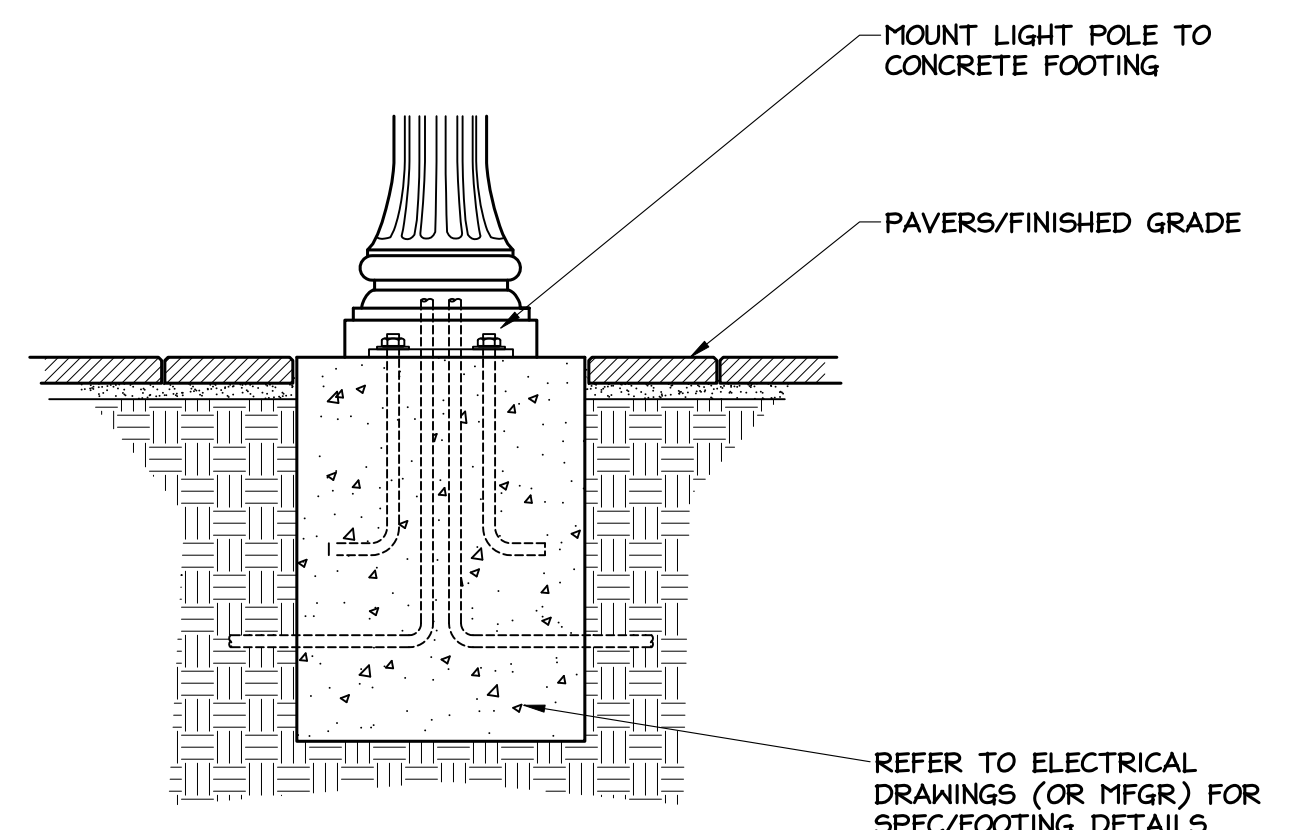
- NOTES:**
1. REFER TO PLAN FOR PAVER TYPE.
 2. ALL SURFACE UTILITIES TO BE ENCASED IN CONCRETE FOR HARDEdge FOR PAVER TO BUTT.
 3. MACHINE VIBRATE ALL PAVERS OVER SAND
 4. BROOM SWEEP CLEAN BUILDERS SAND ON PAVERS TO FILL BUTT JOINT CREVICES.
 5. IMMEDIATELY PRIOR TO BUSINESS OPENING, PRESSURE CLEAN & SEAL ALL PAVERS.
 6. PROVIDE DENSITY TESTING FOR STONE BASE & SUB-BASE

5 PLANTER CURB DETAIL SCALE: 1"=1'-0"

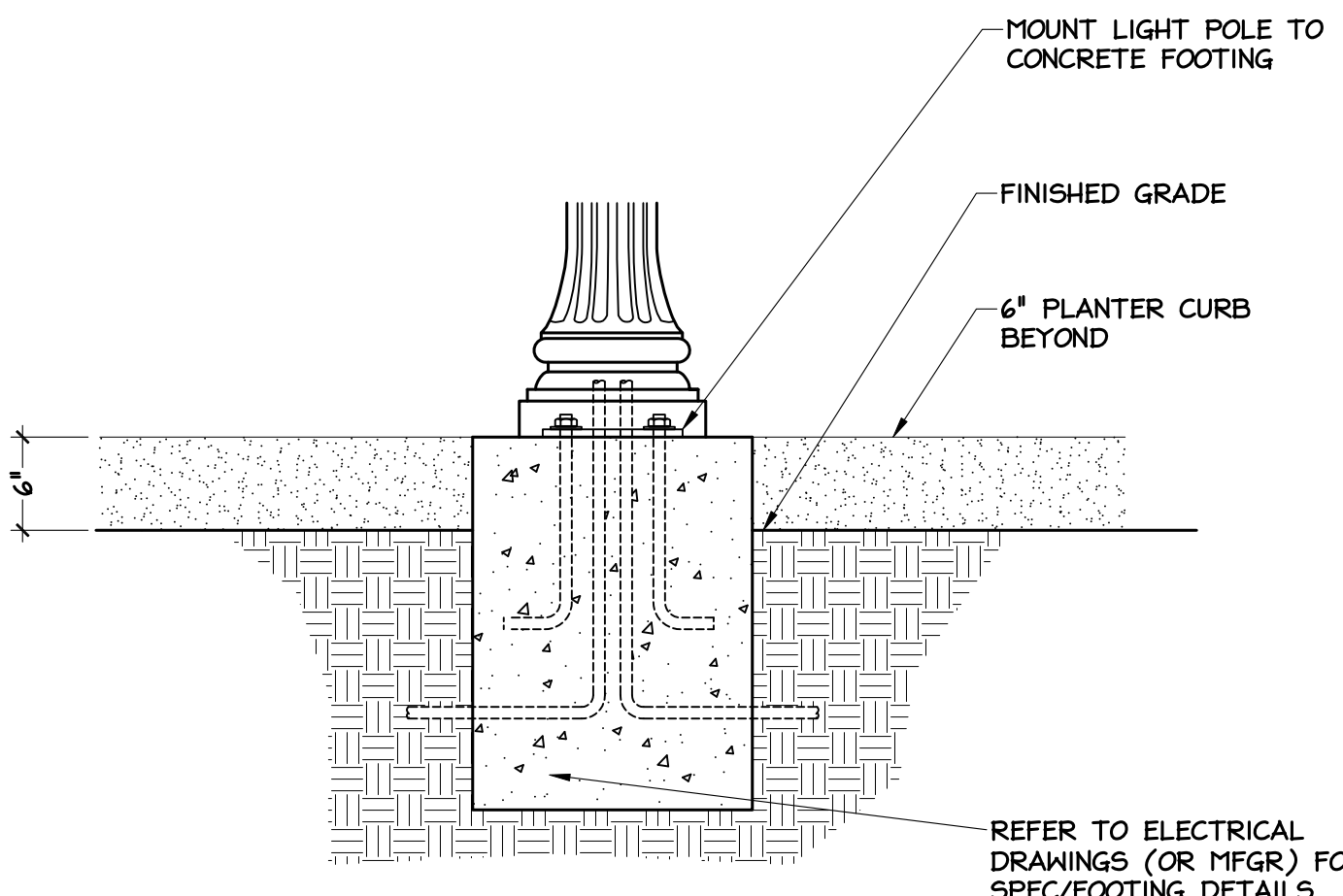


- NOTES:**
1. REFER TO PLAN FOR PAVER TYPE.
 2. ALL SURFACE UTILITIES TO BE ENCASED IN CONCRETE FOR HARDEdge FOR PAVER TO BUTT.
 3. MACHINE VIBRATE ALL PAVERS OVER SAND
 4. BROOM SWEEP CLEAN BUILDERS SAND ON PAVERS TO FILL BUTT JOINT CREVICES.
 5. IMMEDIATELY PRIOR TO BUSINESS OPENING, PRESSURE CLEAN & SEAL ALL PAVERS.
 6. PROVIDE DENSITY TESTING FOR STONE BASE & SUB-BASE

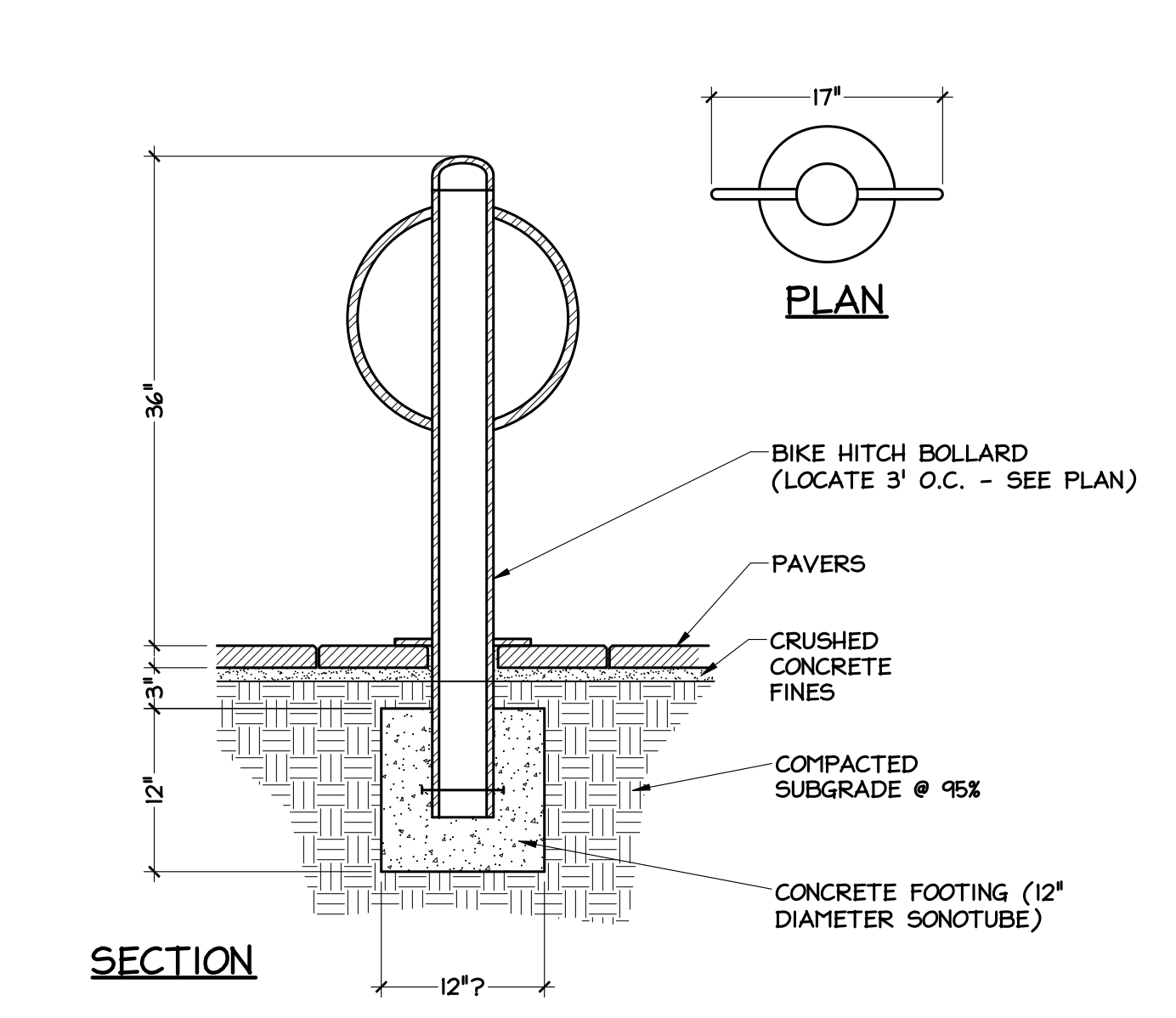
6 RIBBON CURB DETAIL @ PLAZA SCALE: 1"=1'-0"



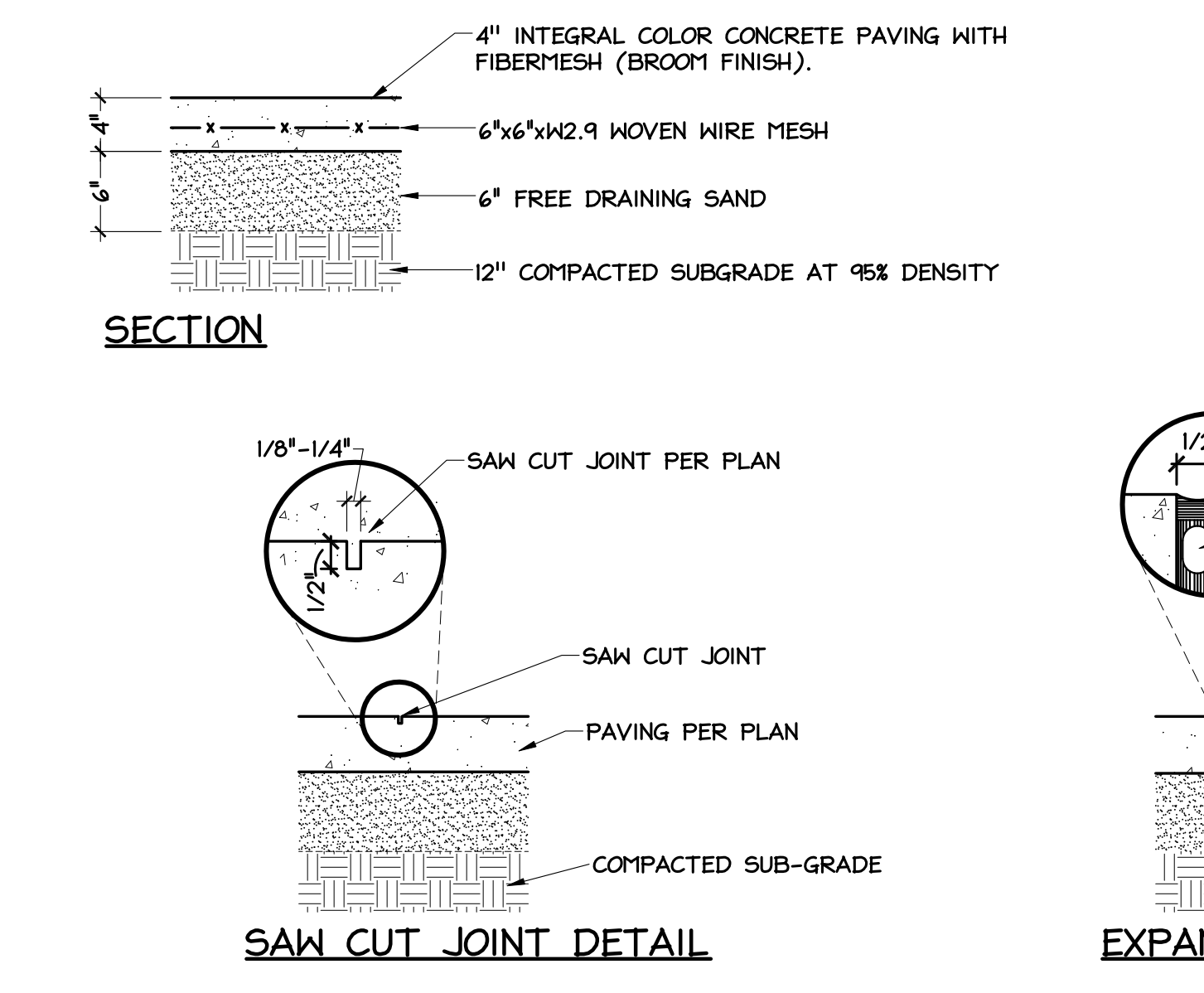
7 POLE LIGHT/ BOLLARD @ PLAZA SCALE: 1"=1'-0"



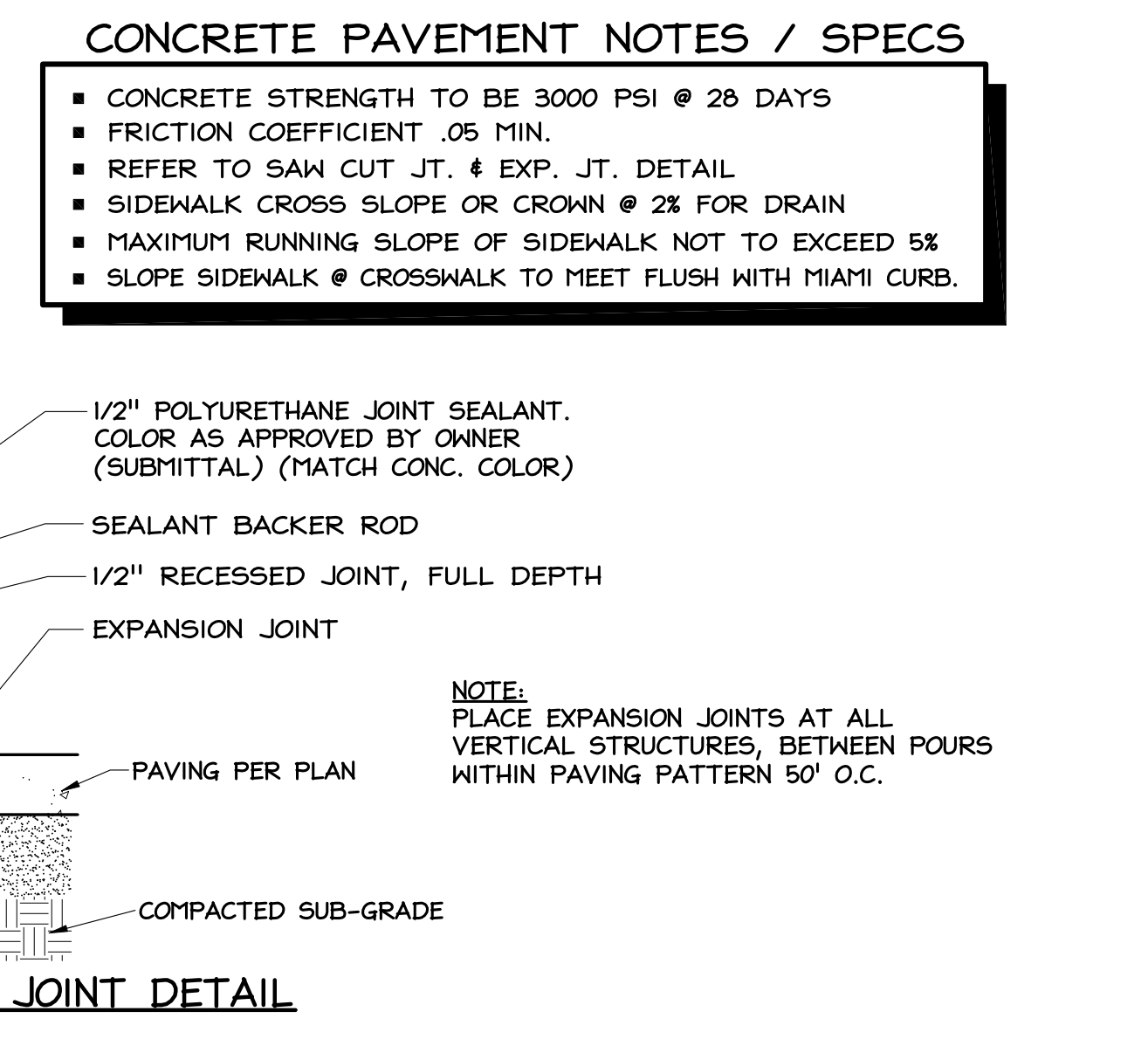
8 POLE LIGHT @ PLANTER SCALE: 1"=1'-0"



9 BIKE HITCH FOOTING SCALE: 1"=1'-0"



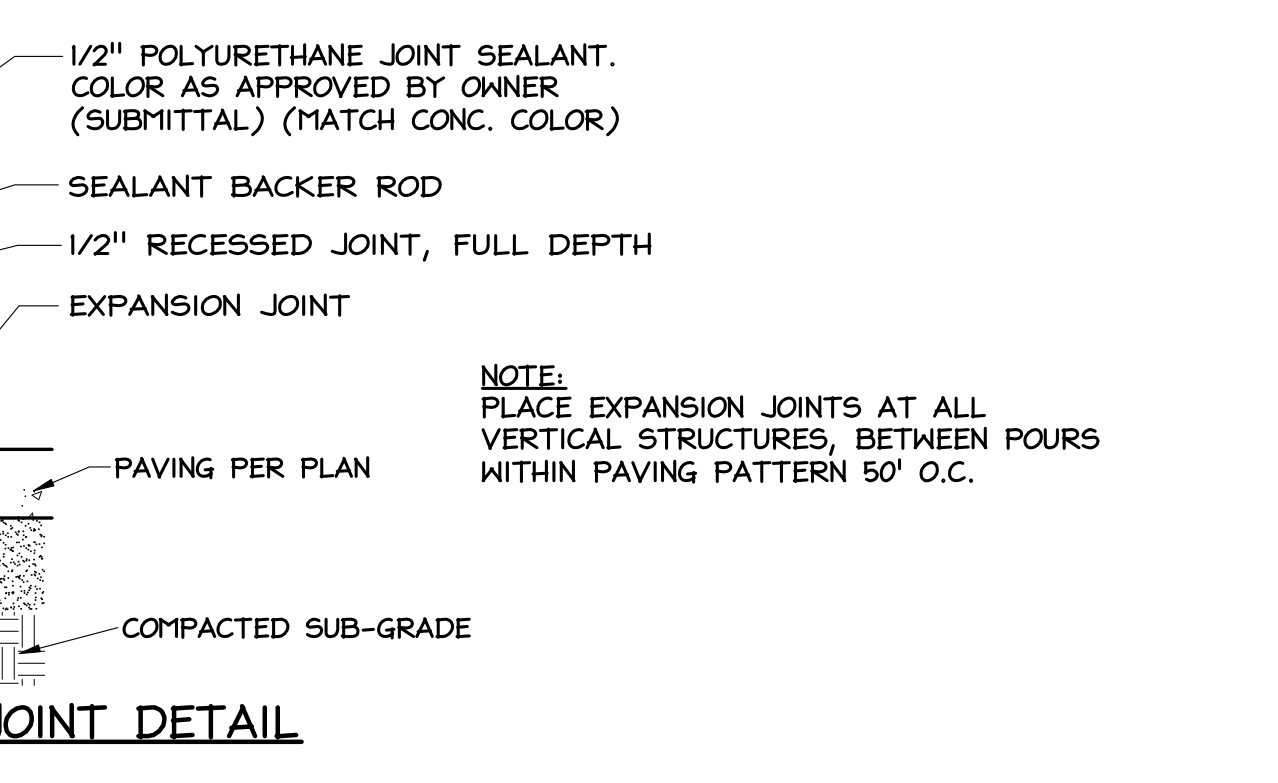
10 CONCRETE PAVEMENT FOR TENANT'S OUTDOOR DINING AREA SCALE: 1"=1'-0"



11 PLANTER BACK CURB DETAIL SCALE: 1"=1'-0"

CONCRETE PAVEMENT NOTES / SPECS

- CONCRETE STRENGTH TO BE 3000 PSI @ 28 DAYS
- FRICTION COEFFICIENT .05 MIN.
- REFER TO SAW CUT JT. & EXP. JT. DETAIL
- SIDEWALK CROSS SLOPE OR CROWN @ 2% FOR DRAIN
- MAXIMUM RUNNING SLOPE OF SIDEWALK NOT TO EXCEED 5%
- SLOPE SIDEWALK @ CROSSWALK TO MEET FLUSH WITH MIAMI CURB.



Artegon
International Drive
Orlando, Florida

Revisions:

No.	Date	Description
1	12/15/2014	Revised for City comments
2	4/21/2014	Revised Toby Keith's patio

Main Entry Hardscape Details

Scale: As Noted
Date: 2/10/2014
Project No.: 1401

Design: JM
Drawn: FT
Checked: JM

Release:

© 2014 Harris Civil Engineers, LLC and Agora Design. All rights reserved. This drawing is the property of Harris Civil Engineers, LLC and Agora Design. No part of this drawing may be reproduced without the written permission of Harris Civil Engineers, LLC and Agora Design.



Revisions:

No.	Date	Description
9		
8		
7		
6		
5		
4		
3		
2	4/21/2014	Revised Toby Kell's patio
1	3/16/2014	Revised for City comments

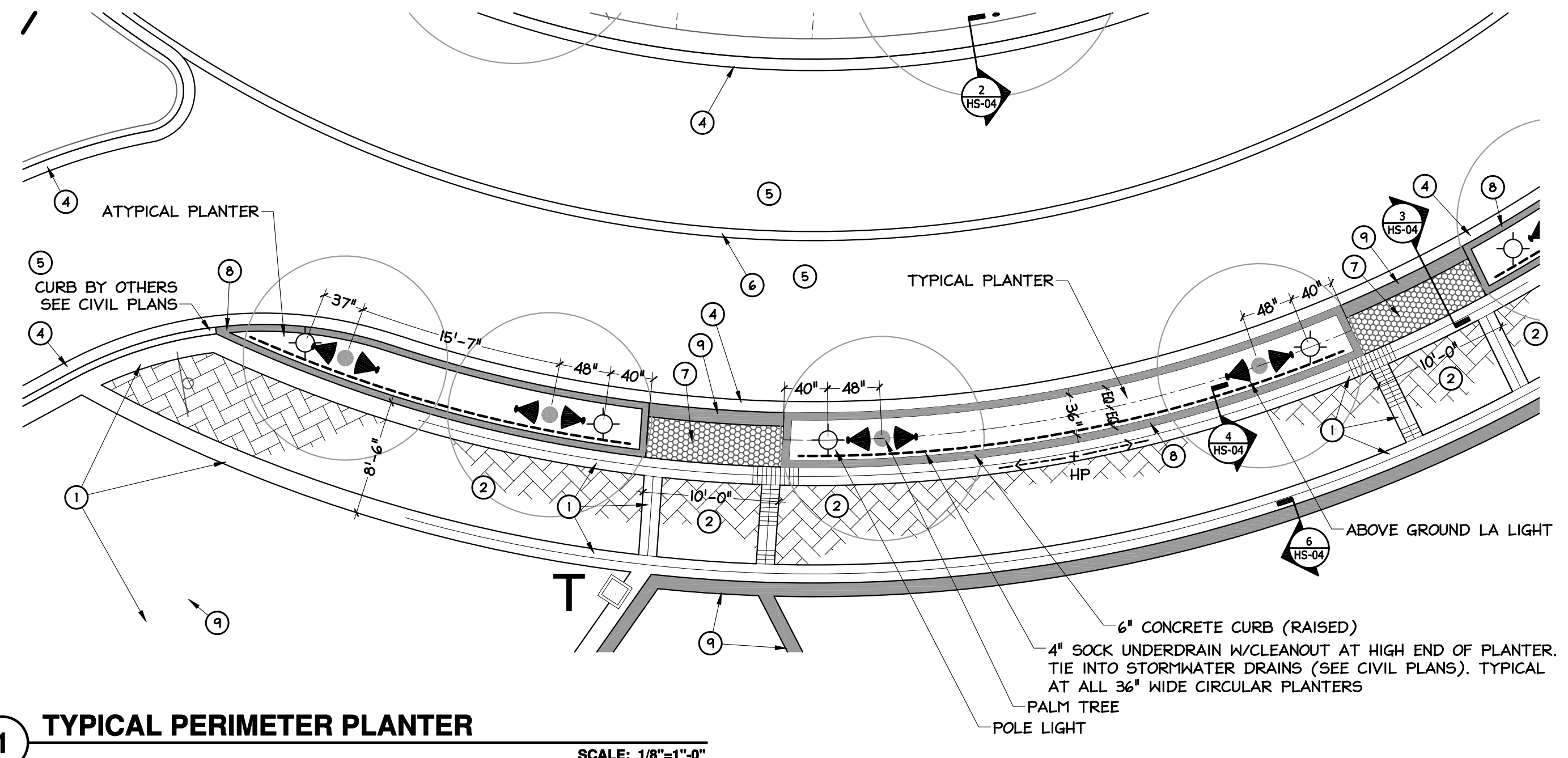
**Main Entry
Hardscape Details**

Scale: As Noted
Date: 2/10/2014
Project No.: 1401

Design: JM
Drawn: FT
Checked: JM

Release:

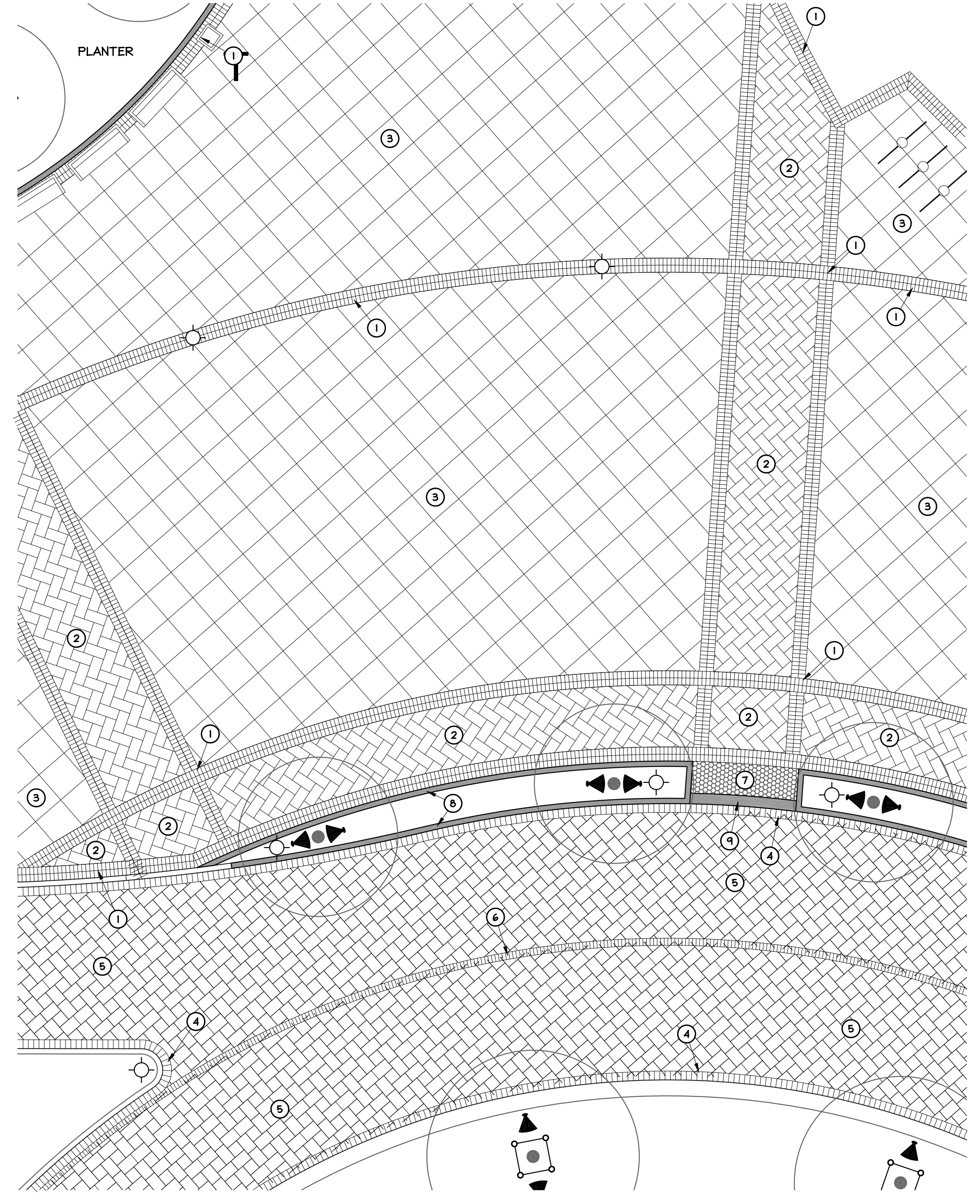
HS-5



1 TYPICAL PERIMETER PLANTER
SCALE: 1/8"=1'-0"

HARDSCAPE KEY NOTES

1. BRICK 4" X 8" PAVER
DOUBLE SOLDIER COURSE PERIMETER BANDS
COLOR: COFFEE
(SEE DETAIL 1 & 2)
2. BRICK 4" X 8" PAVER
FIELD: HERRINGBONE @ 45 DEGREE ANGLE.
COLOR: COFFEE
(SEE DETAIL 1 & 2)
3. PARK PLAZA 12" X 12" PAVER
FIELD: 45 DEGREE ANGLE
COLOR: OLD CHICAGO BRICK
(SEE DETAIL 1)
4. MEGA OLD TOWN PAVER
SINGLE SOLDIER COURSE PERIMETER BANDS
COLOR: RUSTIC
(SEE DETAIL 1, 2 & 3)
5. MEGA OLD TOWN PAVER
FIELD: MODIFIED 3 PIECE T
-PATTERN/RANDOM
COLOR: RUSTIC
(SEE DETAIL 1, 2 & 3)
6. MEGA OLD TOWN 6 1/2" X 9 1/2" PAVER
ROAD CENTER STRIPE
COLOR: WHITE
(SEE DETAIL 1)
7. ADA 4" X 8" BRICK PAVER
BASKET WEAVE
COLOR: CHARCOAL
(SEE DETAIL 1, 2 & 3)
8. 6" RAISED PLANTER CURB
(SEE DETAIL 5)
9. RIBBON CURB
(SEE DETAIL 3 & 6)



2 ENLARGED PLAN
SCALE: 1/8"=1'-0"



PERMIT DOCUMENTS

COPYRIGHT © 2014. ALL IDEAS, ARRANGEMENTS AND PLANS INDICATED OR REPRESENTED BY THIS DRAWING ARE OWNED BY AND THE PROPERTY OF HARRIS CIVIL ENGINEERS, LLC AND WERE CREATED, DEVELOPED AND DEVELOPED FOR USE WITH THE SPECIFIED PROJECT. HARRIS CIVIL ENGINEERS RESERVES COPYRIGHTS AND OTHER RIGHTS RESTRICTING THE DRAWING TO THE ORIGINAL PROJECT OR PURPOSE FOR WHICH THEY WERE PREPARED. REPRODUCTIONS, CHANGES OR ASSIGNMENTS ARE PROHIBITED WITHOUT THE WRITTEN PERMISSION OF HARRIS CIVIL ENGINEERS.

Revisions:

No.	Date	Description
9		
8		
7		
6		
5		
4		
3		
2	4/21/2014	Revised Toby Keith's patio
1	1/15/2014	Revised for City comments

Main Entry Landscape Plan

Scale: 1"=30'
Date: 2/10/2014
Project No.: 1401

Design: JM
Drawn: FT
Checked: JM

Release:

PERMIT DOCUMENTS

PLANT LIST

SYM. QTY. BOTANICAL NAME

COMMON NAME

SPECIFICATION

TREES (NOTE: ALL TREES TO BE FLORIDA FANCY)

xBN	2	BUTAGRUS HABBONNANDII	MULE PALM	12' O.A., FULL HEAD, STRAIGHT TRUNK
LD	12	LIVINSTONA DECORA	RIBBON PALM	22' O.A. HT., 14' C.T., STRAIGHT TRUNK MIN. 10' OF CLEAN TRUNK-NO BOOTS, UPPER BOOTS-TIGHT BOOT CUT, FULL HEAD, FRONDS @ 3-9 O'CLOCK
LN	5	LIVINSTONA NITIDA	CARNATION FAN PALM PALM	22' O.A. HT., 14' C.T. MIN. STRAIGHT TRUNK, CUT BOOTS CLOSE TO TRUNK (BOOTS REMAIN-TIGHT BOOT CUT), FULL HEAD, FRONDS @ 3-9 O'CLOCK
PS	12	PHOENIX SYLVESTRIS	INDIAN DATE PALM	26' O.A. HT., 16' C.T., STRAIGHT TRUNK WITH NO TRUNK TAPER AT BOTTOM FRONDS C.T., DIAMOND CUT, FULL HEAD, FRONDS AT 3-9 O'CLOCK. BACK FILL PLANTING PIT WITH YELLOW GROVE SAND.
PR	1	PHOENIX RECLINATA	RECLINATA PALM	20' O.A. HT., FULL, MULTI TRUNKS/5-7 MAIN MATURE TRUNKS MIN., 10' C.T. MIN. OF TRUNKS. REMOVE INSIGNIFICANT TRUNKS, FRONDS & SUCKERS. FRONDS @ 3-9 O'CLOCK. BACK FILL PLANTING PIT W/90% YELLOW GROVE SAND, 10% COMPOST OR PEAT.
PHR	2	PHOENIX ROEBELENI	PYGMY DATE PALM	10' O.A., MULTI TRUNKS-DOUBLE, FULL HEADS, FRONDS @ 3-9 O'CLOCK.
PRO	2	PHOENIX ROEBELENI	PYGMY DATE PALM	10' O.A., MULTI TRUNKS-QUAD, FULL HEADS, FRONDS @ 3-9 O'CLOCK.
QV	4	QUERCUS VIRGINIANA	LIVE OAK	3" CAL., 12' HT. MIN., 45 GAL FIELD LOCATED.

LN	5	LIVINSTONA NITIDA	CARNATION FAN PALM PALM	22' O.A. HT., 14' C.T. MIN. STRAIGHT TRUNK, CUT BOOTS CLOSE TO TRUNK (BOOTS REMAIN-TIGHT BOOT CUT), FULL HEAD, FRONDS @ 3-9 O'CLOCK
PS	12	PHOENIX SYLVESTRIS	INDIAN DATE PALM	26' O.A. HT., 16' C.T., STRAIGHT TRUNK WITH NO TRUNK TAPER AT BOTTOM FRONDS C.T., DIAMOND CUT, FULL HEAD, FRONDS AT 3-9 O'CLOCK. BACK FILL PLANTING PIT WITH YELLOW GROVE SAND.
PR	1	PHOENIX RECLINATA	RECLINATA PALM	20' O.A. HT., FULL, MULTI TRUNKS/5-7 MAIN MATURE TRUNKS MIN., 10' C.T. MIN. OF TRUNKS. REMOVE INSIGNIFICANT TRUNKS, FRONDS & SUCKERS. FRONDS @ 3-9 O'CLOCK. BACK FILL PLANTING PIT W/90% YELLOW GROVE SAND, 10% COMPOST OR PEAT.
PHR	2	PHOENIX ROEBELENI	PYGMY DATE PALM	10' O.A., MULTI TRUNKS-DOUBLE, FULL HEADS, FRONDS @ 3-9 O'CLOCK.
PRO	2	PHOENIX ROEBELENI	PYGMY DATE PALM	10' O.A., MULTI TRUNKS-QUAD, FULL HEADS, FRONDS @ 3-9 O'CLOCK.
QV	4	QUERCUS VIRGINIANA	LIVE OAK	3" CAL., 12' HT. MIN., 45 GAL FIELD LOCATED.

NOTE: ALL TREES AND PALMS FLORIDA # 1. PROVIDE PHOTOS OF ALL PALMS TO OWNER REP & LANDSCAPE ARCHITECT FOR APPROVAL PRIOR TO INSTALLATION.

NOTE: PLANT ALL TREES, PALM TREES ROOTBALL 1" ABOVE FINISH GRADE, & DO NOT ADD MULCH TO INSIDE OF TEMPORARY SOIL SAUCERS. KEEP MULCH AWAY FROM TREE TRUNKS.

TREE REMOVAL NOTE: *Due to the removal of 30' of shade trees, 30' of shade trees will be replanted. This requirement will be fulfilled with the installation of 4 - 3" Live Oak trees and 2:1 Palm tree conversion rate (36 - Palms installed). * Per Justin Garber, City of Orlando arborist Permit #1409.

SHRUBS AND GROUNDCOVER

ANN	200	ANNUALS	RED WAX BEGONIAS	10" POTS, 8" O.C., PLANT W/CLEAN POTTING SOIL
BGD	12	BOUGAINVILLEA GRAND 'HELEN JOHNSON'	DWARF RED BOUGAINVILLEA	3 GAL., 2" O.C.
CH	246	CALLANDRA HAEMATOCEPHALA 'NANA DW'	DWARF RED POWDER PUFF	3 GAL., 30" O.C.
CAL	18	CORYLYNE FRUITCOSA 'AUNTILLOU'	AUNTILLOU TI PLANT	7 GAL., 3 PPP. CONTACT EXCELSA GARDENS @ 561-790-3789
CF	9	CORYLYNE FRUITCOSA 'AUNTILLOU'	AUNTILLOU TI PLANT	3 GAL., 3 PPP. PLANT RANDOMLY WITH CANDY CANE. CONTACT EXCELSA.
CF	9	CORYLYNE FRUITCOSA 'CANDY CANE'	CANDY CANE TI	3 GAL., 3 PPP. PLANT RANDOMLY WITH AUNTIE LOU. CONTACT EXCELSA.
CV	30	CODIAEUM VARIEGATUM 'MAMMI'	CROTON MAMMI	7 GAL., 3" O.C.
HD	170	HELLIANTHUS DEBILIS	BEACH SUNFLOWER	1 GAL., 18" O.C.
LF	15	LEUCOPHYLLUM FRUTESCENS 'SILVER'	PURPLE TEXAS SAGE	3 GAL., 3" O.C.
MC	24	MUHLENBERGIA CAPILLARIS	PINK MUHLY GRASS	3 GAL., FULL, 3" O.C.
PM	15	PODOCARPUS MACROPHYLLUS	JAPANESE YEW	15 GAL., 5" HT., 3" O.C.
SRC	26	SERENOA REPENS 'CINEREA'	SILVER SAW PALMETTO	3 GAL., 3" O.C.
TAV	570	TRACHELOSPERMUM ASIATICUM 'MINIMA' VARG	VARIGATED DWARF JASMINE	1 GAL. FULL, 18" O.C.
TAS	300	TRACHELOSPERMUM ASIATICUM 'SUMMER SUNSET OR 'ANGYO'	SUMMER SUNSET JASMINE	1 GAL. FULL, 18" O.C.
TDJ	149	TIBOUCHINA DWARF JULES	DWARF TIBOUCHINA	3 GAL., 30" O.C.
TG	6	TIBOUCHINA GRANDIFOLIA	GIANT LEAF GLORY TREE	15 GAL., 3'-4' HT.
VI	7	ALCANTAREA (VRESEA) IMPERIALIS 'RED'	RED GIANT IMPERIAL BROMILIAD	7 GAL., 24" HT. X 28" SPRD., FULL CONTACT. GRANT'S FARM NURSERY @ 954-452-1668

ANN	200	ANNUALS	RED WAX BEGONIAS	10" POTS, 8" O.C., PLANT W/CLEAN POTTING SOIL
BGD	12	BOUGAINVILLEA GRAND 'HELEN JOHNSON'	DWARF RED BOUGAINVILLEA	3 GAL., 2" O.C.
CH	246	CALLANDRA HAEMATOCEPHALA 'NANA DW'	DWARF RED POWDER PUFF	3 GAL., 30" O.C.
CAL	18	CORYLYNE FRUITCOSA 'AUNTILLOU'	AUNTILLOU TI PLANT	7 GAL., 3 PPP. CONTACT EXCELSA GARDENS @ 561-790-3789
CF	9	CORYLYNE FRUITCOSA 'AUNTILLOU'	AUNTILLOU TI PLANT	3 GAL., 3 PPP. PLANT RANDOMLY WITH CANDY CANE. CONTACT EXCELSA.
CF	9	CORYLYNE FRUITCOSA 'CANDY CANE'	CANDY CANE TI	3 GAL., 3 PPP. PLANT RANDOMLY WITH AUNTIE LOU. CONTACT EXCELSA.
CV	30	CODIAEUM VARIEGATUM 'MAMMI'	CROTON MAMMI	7 GAL., 3" O.C.
HD	170	HELLIANTHUS DEBILIS	BEACH SUNFLOWER	1 GAL., 18" O.C.
LF	15	LEUCOPHYLLUM FRUTESCENS 'SILVER'	PURPLE TEXAS SAGE	3 GAL., 3" O.C.
MC	24	MUHLENBERGIA CAPILLARIS	PINK MUHLY GRASS	3 GAL., FULL, 3" O.C.
PM	15	PODOCARPUS MACROPHYLLUS	JAPANESE YEW	15 GAL., 5" HT., 3" O.C.
SRC	26	SERENOA REPENS 'CINEREA'	SILVER SAW PALMETTO	3 GAL., 3" O.C.
TAV	570	TRACHELOSPERMUM ASIATICUM 'MINIMA' VARG	VARIGATED DWARF JASMINE	1 GAL. FULL, 18" O.C.
TAS	300	TRACHELOSPERMUM ASIATICUM 'SUMMER SUNSET OR 'ANGYO'	SUMMER SUNSET JASMINE	1 GAL. FULL, 18" O.C.
TDJ	149	TIBOUCHINA DWARF JULES	DWARF TIBOUCHINA	3 GAL., 30" O.C.
TG	6	TIBOUCHINA GRANDIFOLIA	GIANT LEAF GLORY TREE	15 GAL., 3'-4' HT.
VI	7	ALCANTAREA (VRESEA) IMPERIALIS 'RED'	RED GIANT IMPERIAL BROMILIAD	7 GAL., 24" HT. X 28" SPRD., FULL CONTACT. GRANT'S FARM NURSERY @ 954-452-1668

SOD 'Z': SOD 'Z' ZOYSIA 'EMPIRE'
** *ADD LESCO 16-0-8 TIME RELEASE FERTILIZER TO ALL TREES, PALMS, & SHRUBS PLANTINGS.

NOTES:

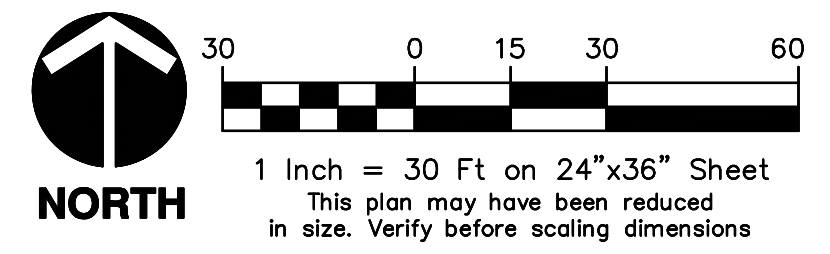
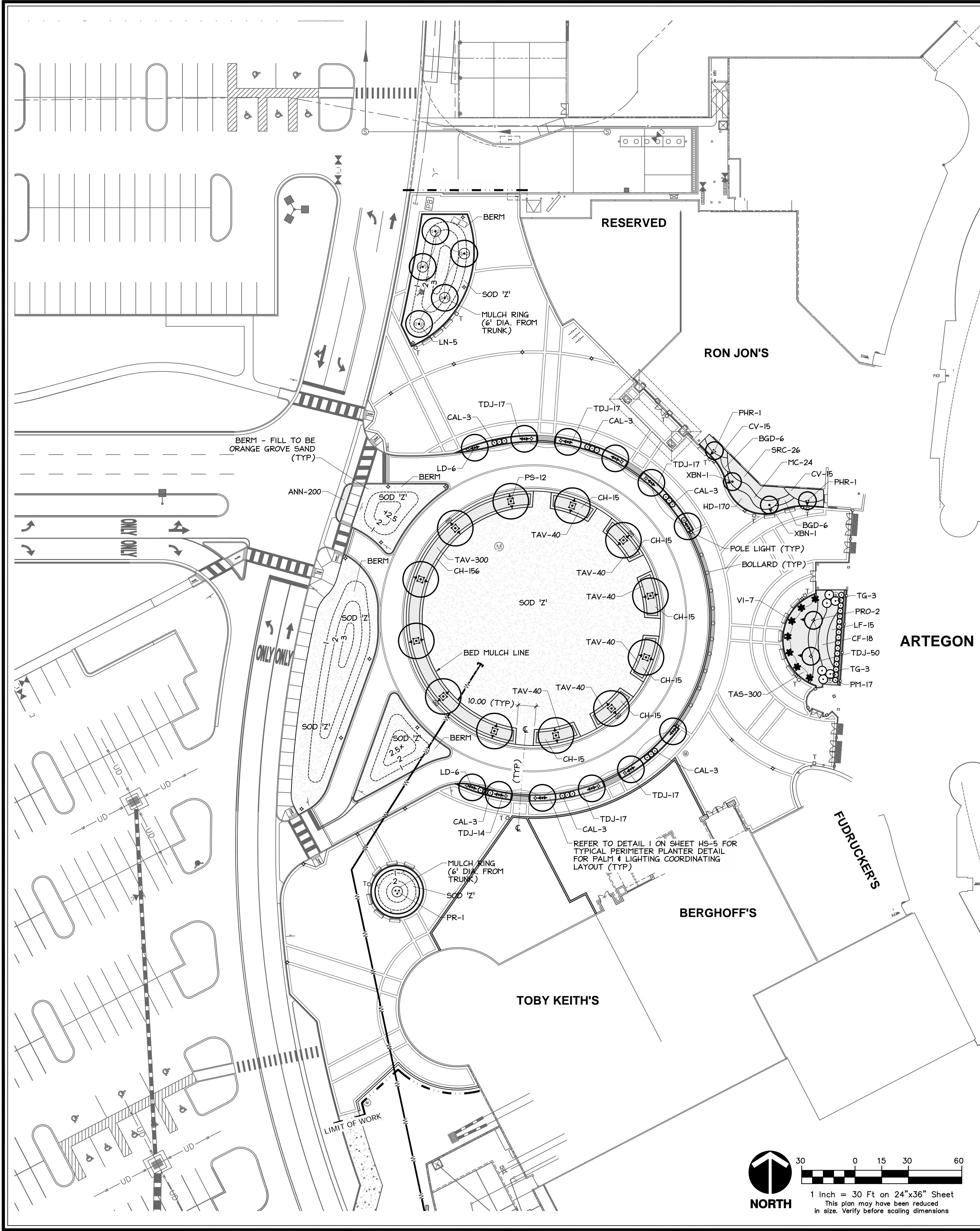
- * TREES TO BE GUARANTEED 1 YEAR, SHRUBS, GROUNDCOVERS, SOD - 90 DAYS, FROM ACCEPTANCE.
- * ALL TREES, SHRUBS & GROUNDCOVERS TO BE FLORIDA # 1 OR BETTER PER NURSERY GRADES & STANDARDS.
- * SCARIFY ALL ROOTBALLS OF SHRUBS/GROUNDCOVERS PRIOR TO PLANTING TO INSURE ELIMINATION OF VISIBLE MATTING OF ROOTBALL.
- * ALL PLANTS TO BE FLORIDA #1 OR BETTER PER FLORIDA NURSERY GRADES AND STANDARDS.
- * MULCH ALL BEDS AND TREE PITS WITH 3" DEEP MINI PINE BARK CHIPS. (CONTACT BOLLING FORREST PRODUCTS @ 869-9003).
- * REFER TO PLANTING NOTES & SPECIFICATIONS ON LANDSCAPE DETAIL SHEET.

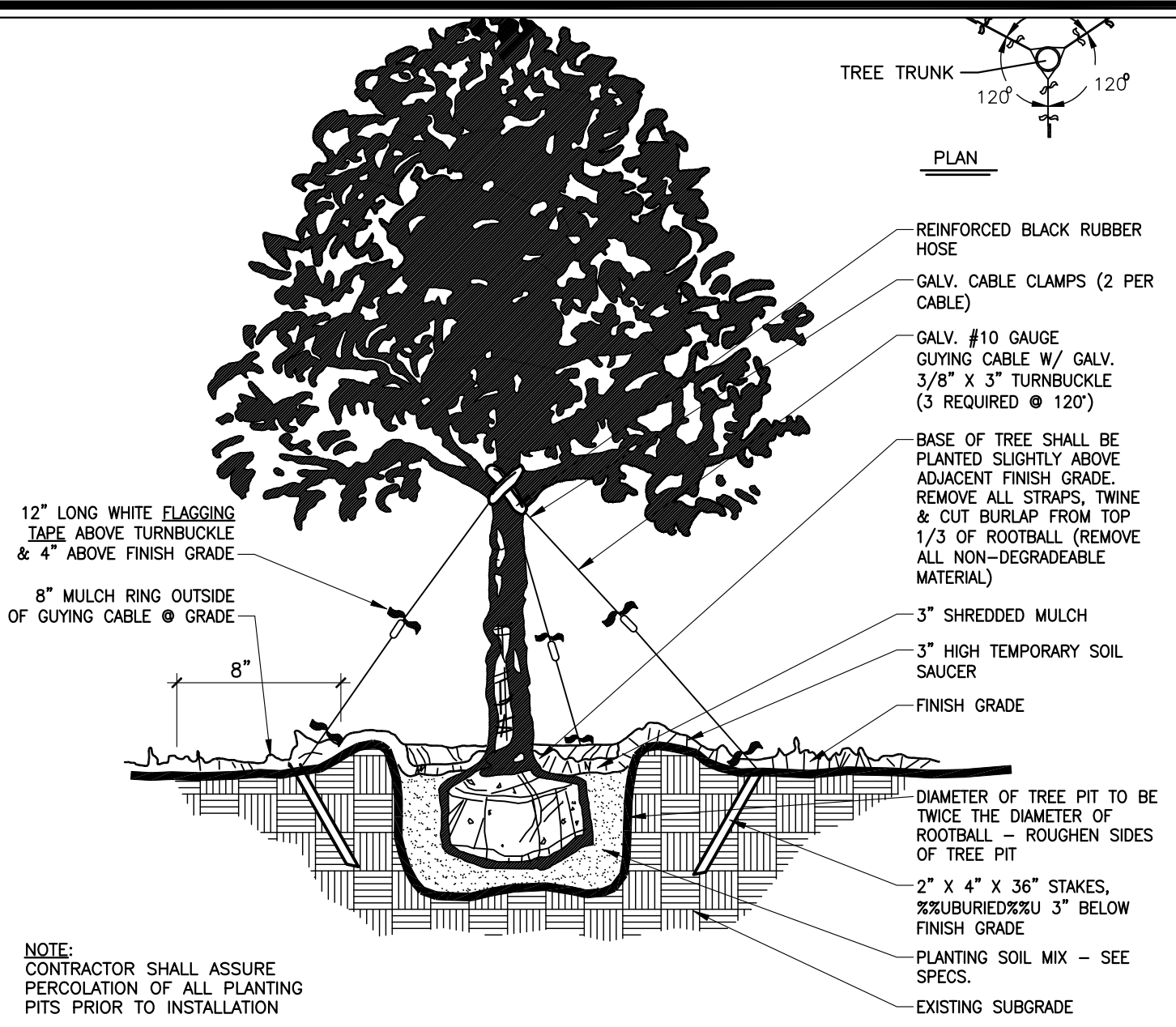
* LANDSCAPE CONTRACTOR TO PROVIDE QUANTITIES & UNIT PRICES ON ALL PLANT MATERIAL, MULCH, SOIL, FERTILIZERS & IRRIGATION PER PLANS & SPECIFICATIONS.

* IRRIGATION SYSTEM TO WARRANTED 1 YEAR FROM ACCEPTANCE. PROVIDE IRRIGATION AS BUILT WHEN JOB COMPLETED TO OWNER REP.

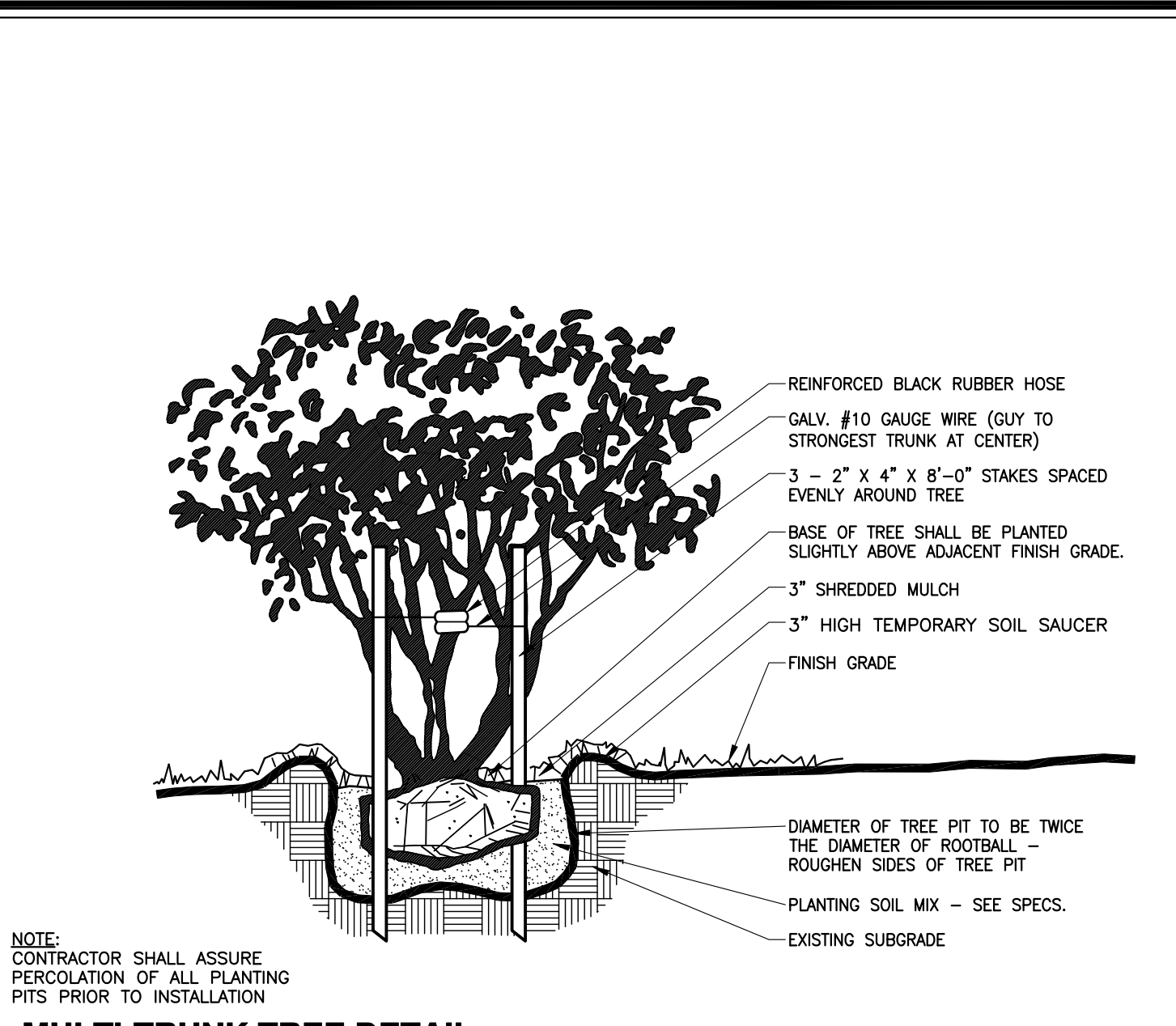
PLANT SOURCES:

- * SYLVESTRIS TREE FARMS/772-778-3006: PS
- * FISHBRANCH/863-735-2242: xBN, LD, LN, PS
- * SEBASTIAN TREE FARMS/(863) 634-4115: PR
- * BROOKVILLE PALMS/352-799-0676: xBN
- * BOYTON BOTANICALS/561-737-1490: CH, CN, CV, TG
- * EXCELSA GARDENS: CAL, CF, CV
- * GRAY'S ORNAMENTALS/561-496-6442: TDJ

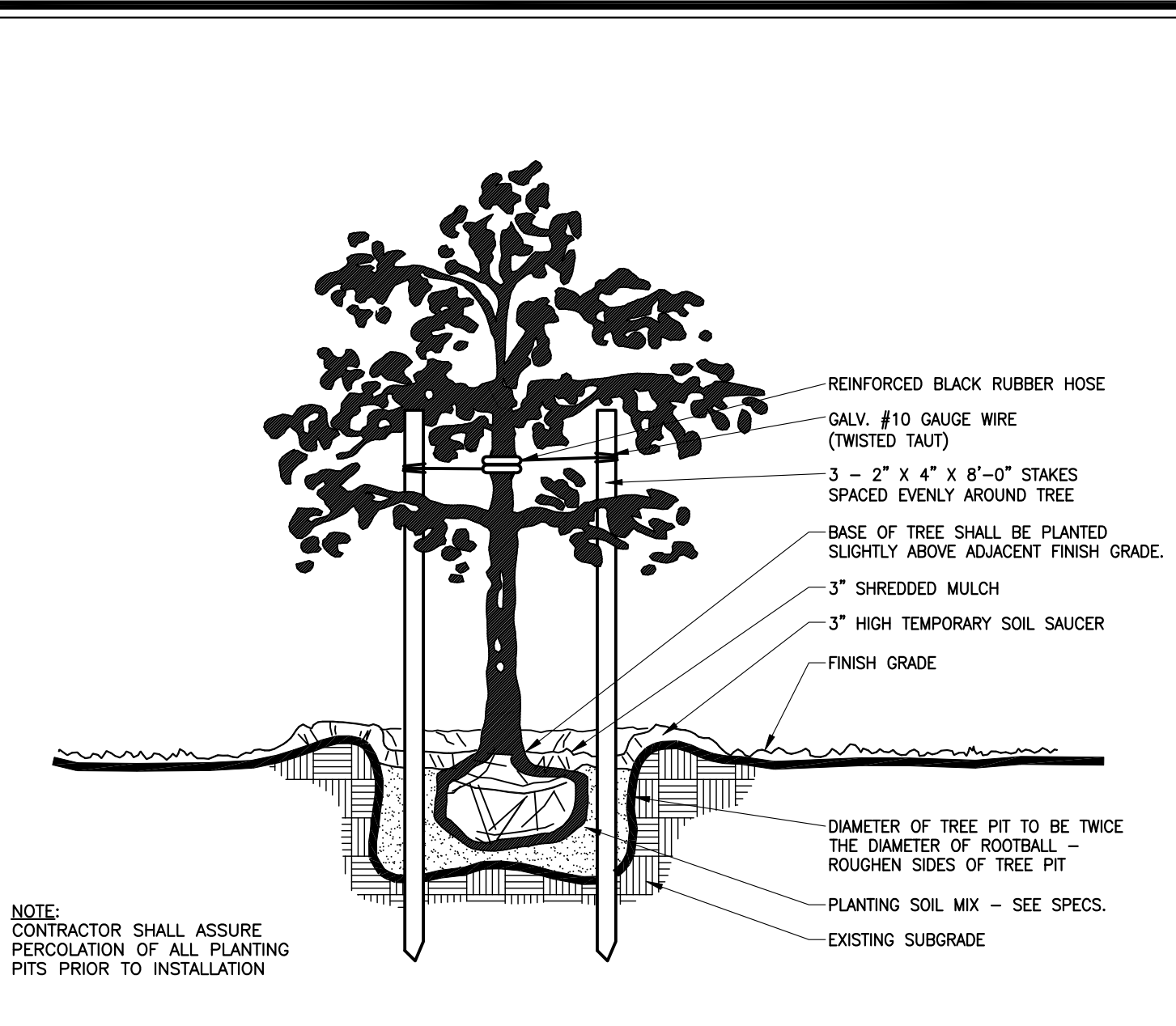




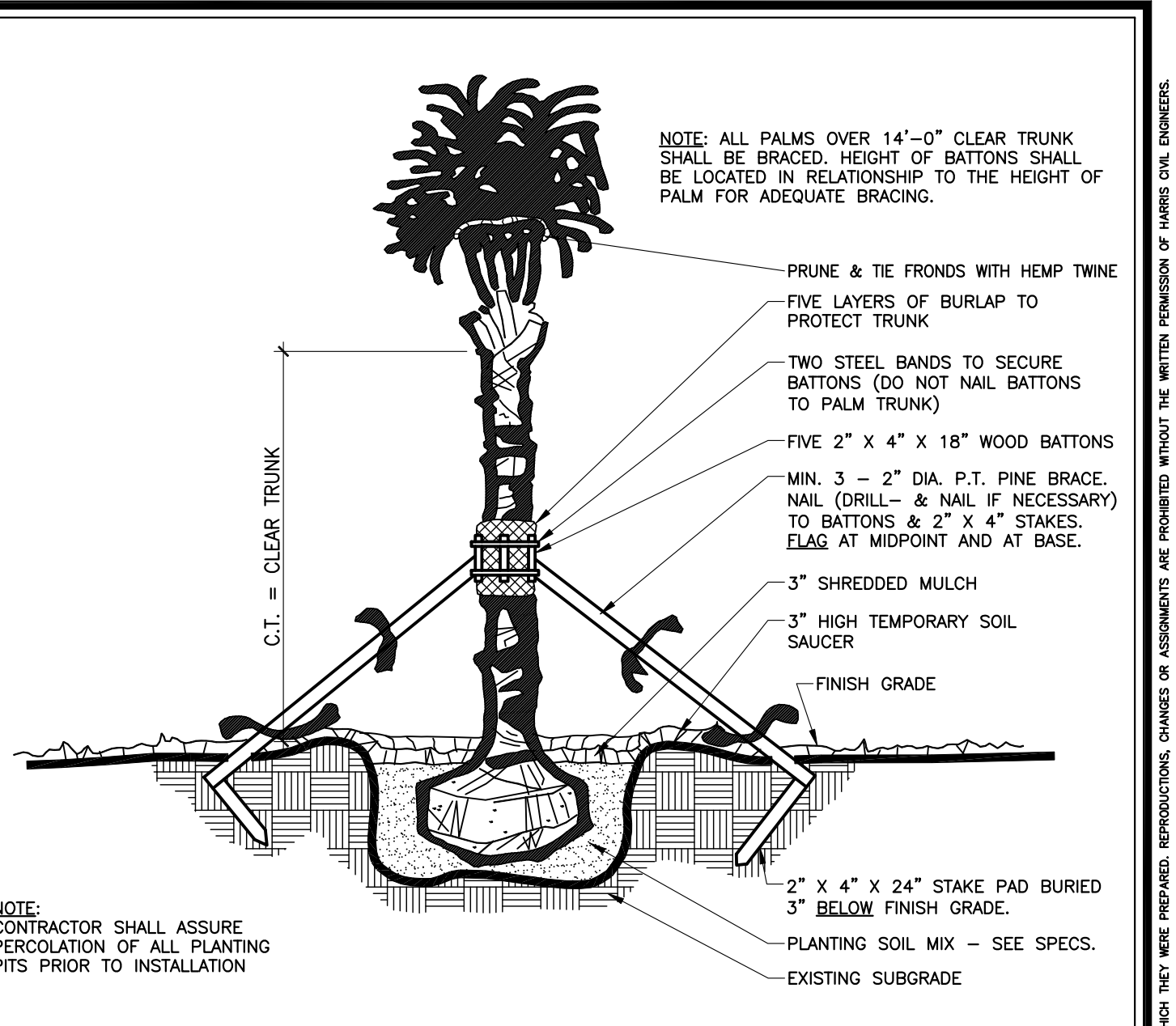
LARGE TREE DETAIL
SCALE: N.T.S.



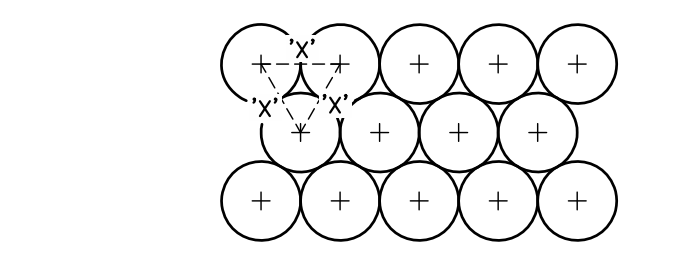
MULTI-TRUNK TREE DETAIL
SCALE: N.T.S.



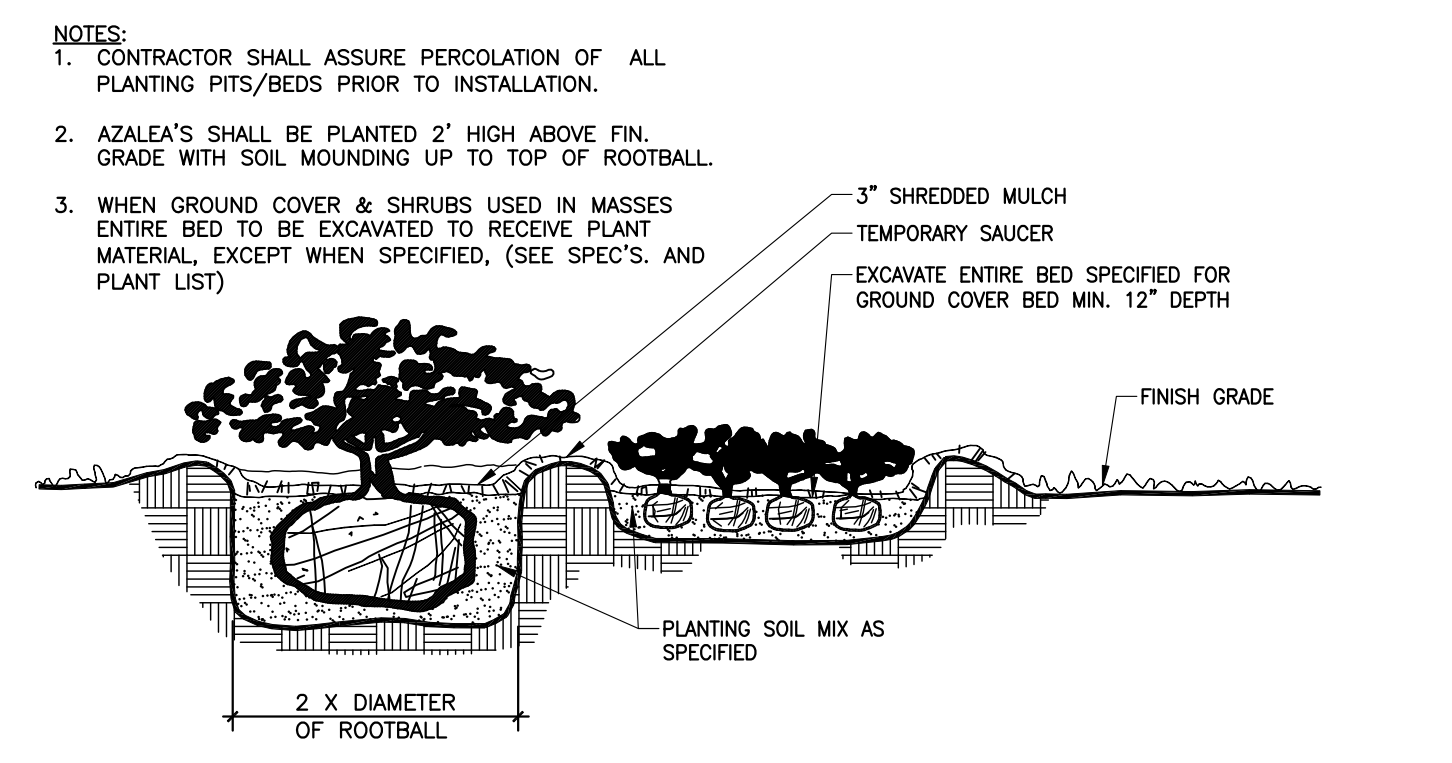
SMALL TREE DETAIL
SCALE: N.T.S.



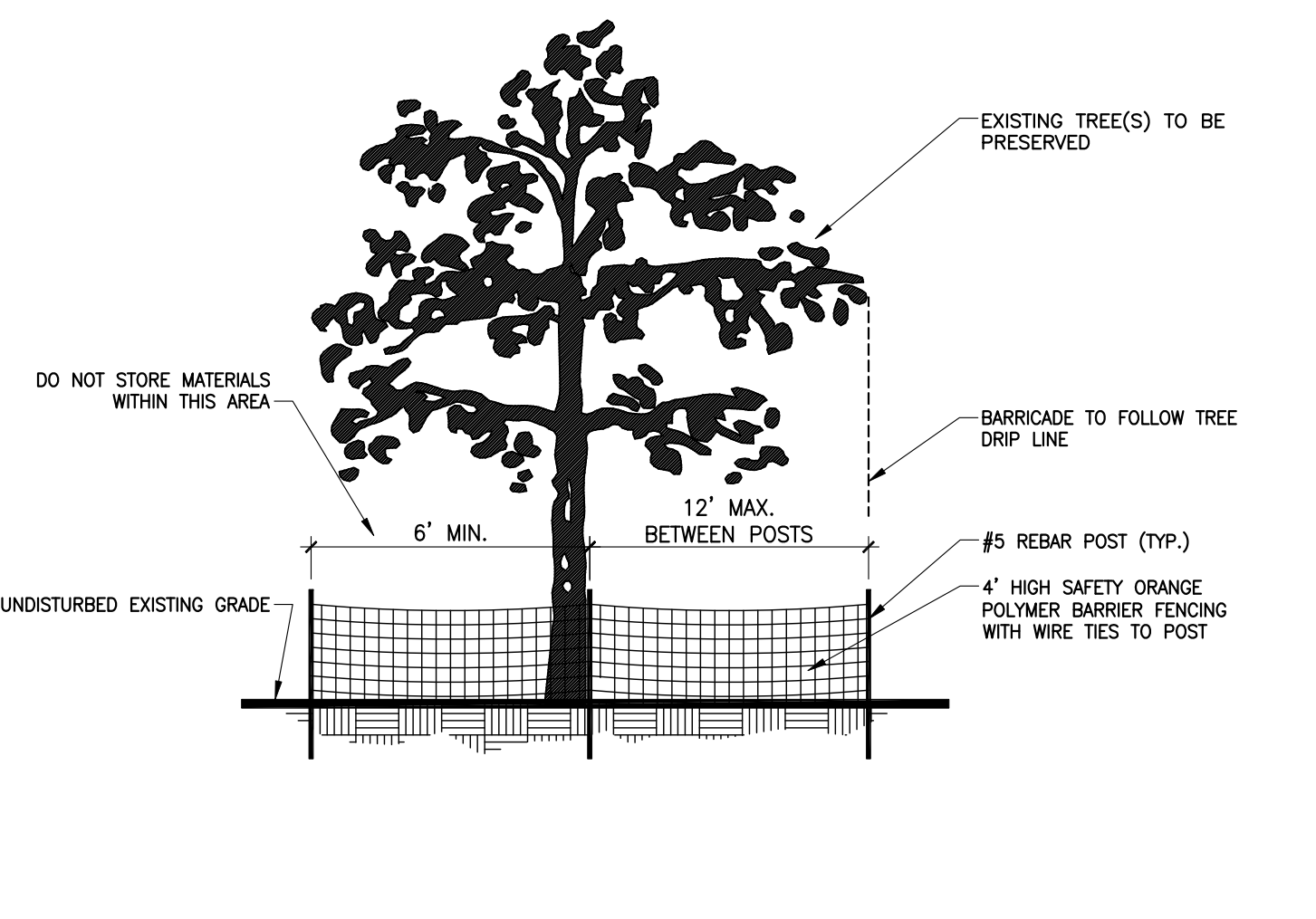
PALM TREE DETAIL
SCALE: N.T.S.



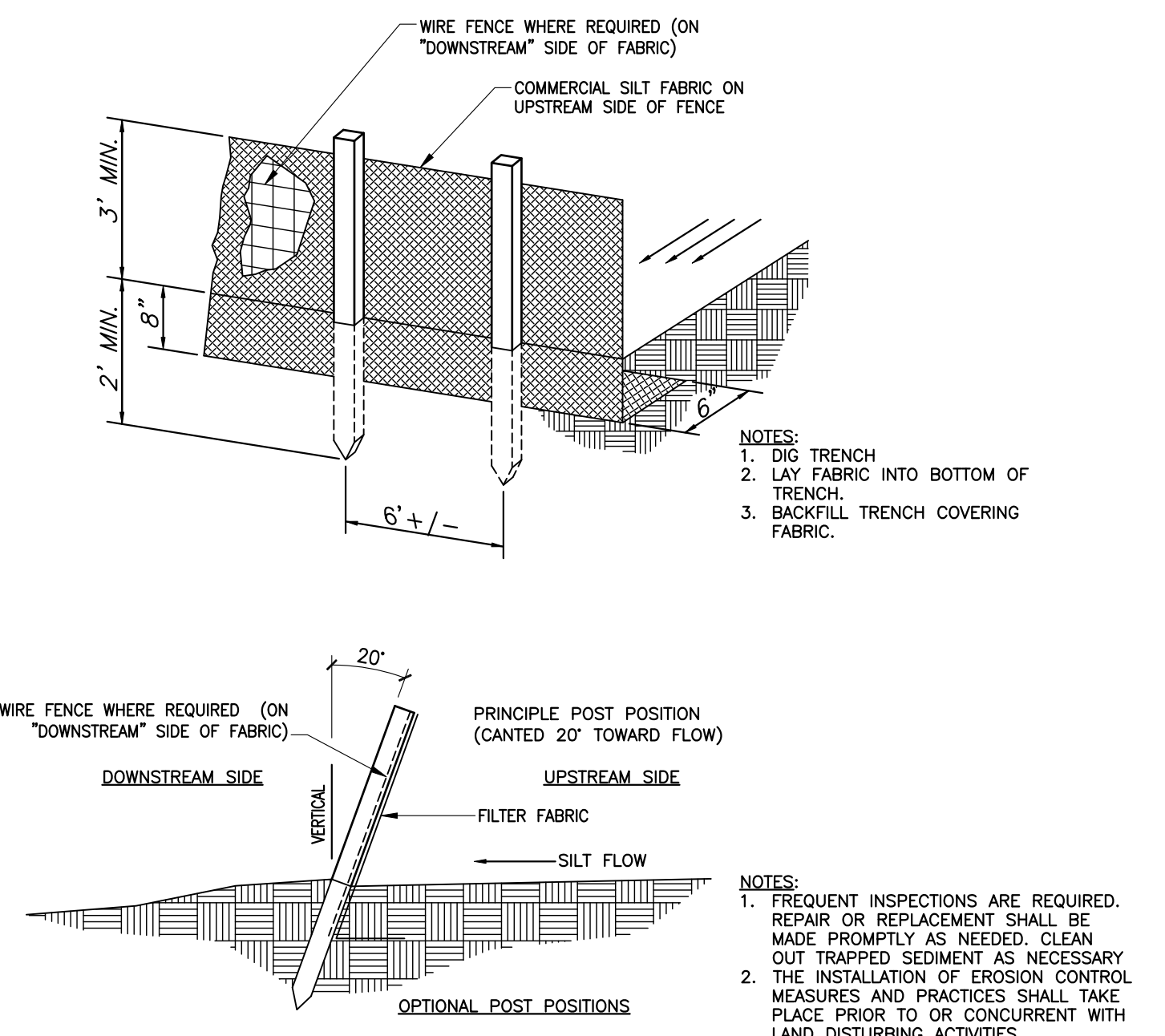
TYPICAL PLANT SPACING
SCALE: N.T.S.



SHRUB / GROUNDCOVER DETAIL
SCALE: N.T.S.



TREE BARRICADE DETAIL
SCALE: N.T.S.



SEDIMENT CONTROL BARRIER DETAIL
SCALE: N.T.S.

PLANTING NOTES & SPECIFICATIONS:

- TREES TO BE GUARANTEED 1 YEAR, SHRUBS, GROUNDCOVER, SOD - 90 DAYS.
- IRRIGATION SYSTEM TO BE WARRANTED 1 YEAR.
- CONTRACTOR TO REMOVE ANY NON-BIODEGRADABLE MATERIAL FROM TREE AND SHRUB ROOTBALL (GROW-BAGS, ETC. TYP.)
- ADD WEED FREE ORGANIC FLORIDA PEAT TO AZALEAS & GARDENIAS PLANTING PITS ONLY. SCARIFY ALL ROOTBALLS OF AZALEAS PRIOR TO PLANTING TO INSURE ELIMINATION OF VISIBLE MATTING OF ROOTBALL.
- CONTRACTOR TO VERIFY ALL PLANT QUANTITIES ON PLAN. PLANT CALL OUTS ON PLAN OVERRULE TOTAL QUANTITIES ON PLAN LIST.
- THE LANDSCAPE AND IRRIGATION WORK SHALL BE ACCOMPLISHED BY A SINGLE CONTRACTOR EXPERIENCED AND SPECIALIZING IN LANDSCAPE IMPROVEMENTS. CONTRACTOR SHALL PROVIDE AT LEAST ONE PERSON, ACCEPTABLE TO ALL PARTIES ON THE JOB, WHO SHALL BE PRESENT AT ALL TIMES DURING THE EXECUTION OF THIS PORTION OF THE WORK, AND WHO SHALL BE THOROUGHLY FAMILIAR WITH THE TYPE OF MATERIALS BEING INSTALLED AND EXPERIENCED IN THE RECOMMENDED METHODS OF INSTALLATION, AND WHO SHALL DIRECT ALL WORK PERFORMED PER THESE LANDSCAPE AND IRRIGATION CONSTRUCTION DOCUMENTS.
- DELIVER TREES AND SHRUBS AFTER PREPARATIONS FOR PLANTING HAVE BEEN COMPLETED AND PLANT IMMEDIATELY. IF PLANTING IS DELAYED MORE THAN 6 HOURS AFTER DELIVERY, PROTECT FROM SUN AND WEATHER, VANDALISM, AND MECHANICAL DAMAGE, AND KEEP ROOTS MOIST. PALMS TO BE PLANTED WITHIN 24 HOURS DELIVERED TO SITE.
- TREES MOVED BY WINCH OR CRANE SHALL BE THOROUGHLY PROTECTED FROM CHAIN MARKS, GIRDLING, OR OTHER BARK SLIPPAGE BY MEANS OF BURLAP, WOOD BATTENS OR OTHER APPROVED METHODS. PLANTS OR TREES WHICH ARE SEVERELY SCARRED, SKINNED, BROKEN, OR WITH ROPE OR CABLE MARKS WILL NOT BE ACCEPTED.
- DO NOT REMOVE CONTAINER GROWN STOCK OR FIELD GROWN TREES FROM "GROW-BAGS" UNTIL PLANTING TIME. CONTAINER GROWN PLANTS SHALL BE CAREFULLY REMOVED FROM THE CONTAINER SO AS NOT TO DISTURB THE ROOT SYSTEM. "GROW BAGS" SHALL BE COMPLETELY REMOVED FROM TREES WITH CARE TO BE TAKEN NOT TO DISTURB THE ROOT (NO NON-BIODEGRADABLE FIBERS SHALL BE PRESENT).
- ALL PLANTING SOIL SHALL BE FREE OF LIMEROCK, HARDPAN, MUCH AND CONSTRUCTION DEBRIS.
- TEST PH OF EXISTING SOIL BY METHODS ACCEPTABLE TO CURRENT INDUSTRY STANDARDS. IF PH IS NOT BETWEEN 5.5 AND 6.5 ADD APPROVED SOIL CONDITIONER/ADDITIVE TO BRING PH TO THE SPECIFIED RANGE.
- ALL TREES AND SHRUBS SHALL BE IN A PLUMB CONDITION; IT IS THE RESPONSIBILITY OF THE CONTRACTOR TO PROPERLY STAKE ALL MATERIAL AS NEEDED. STAKING METHOD SHOULD BE AN APPROVED METHOD BEING EFFECTIVE, ATTRACTIVE AND SAFE.
- SOD: TIME DELIVERY SO THAT SOD WILL BE PLACED WITHIN 24 HOURS AFTER STRIPPING. PROTECT SOD AGAINST DRYING AND BREAKING OF STRIPS. PROVIDE STRONGLY ROOTED SOD, FREE OF WEEDS, UNDESIRABLE NATIVE GRASSES, FUNGUS, INSECTS AND ALL OTHER DISEASES. AREAS TO BE SODDED AS SHOWN ON PLAN SHALL BE CLEANED OF ALL LOOSE ROCKS AND STICKS. TREAT ALL AREAS WITH "ROUND-UP". SOIL AS SPECIFIED SHALL SPREAD AND RAKED TO ACHIEVE A PERFECTLY SMOOTH SURFACE FREE FROM BUMPS AND DEPRESSIONS. THIS SOD SHALL BE LAID IMMEDIATELY FOLLOWING THE RAKING BARRING ANY CHANCE OF DISTURBING THE GRADE.
- ALL PLANT MATERIAL SHALL BE IN FULL AND STRICT ACCORDANCE WITH FLORIDA NO. 1 GRADE, ACCORDING TO THE "GRADES AND STANDARDS FOR NURSERY PLANTS" PUBLISHED BY THE FLORIDA DEPARTMENT OF AGRICULTURE AND CONSUMER SERVICES AND THE PROJECT MANUAL AND SPECIFICATIONS.
- ALL COLLECTED PLANT MATERIAL (MYRICA CERIFERA AND SABAL PALMETTO) SHALL FULLY CONFORM TO FLORIDA NO. 1, GRADE, AS SPECIFIED, ESPECIALLY CONFORMING TO MINIMUM ROOT BALL SIZE. BURLAPPING THE ROOT BALL SHALL NOT BE REQUIRED IF THE PALM IS DUG FROM MARL OR HEAVY SOIL THAT ADHERES TO THE ROOTS AND RETAINS ITS SHAPE WITHOUT SHATTERING. PROVIDED MOISTENED BURLAP MATERIAL IS USED TO COVER THE BALL, THE ROOTS ARE NOT EXPOSED TO WIND OR SUN, AND THE PALM IS PLANTED WITHIN 24 HOURS AFTER BEING DUG. ANY PALM NOT CONFORMING TO THESE STANDARDS AND SPECIFICATIONS SHALL BE SUBJECT TO REJECTION.
- CONTRACTOR TO REMOVE EXISTING PLANT MATERIAL AND GRASS IN AREA THAT REFLECTS NEW PLANTING ON LANDSCAPE PLAN.
- SHRUBS AND GROUNDCOVERS ARE SHOWN AS MASS PLANTING AREAS. REFER TO DETAILS AND SPECIFICATIONS FOR SPACING. WHEN SHOWN, INSTALL INDIVIDUAL PLANTS AS DELINEATED.
- LANDSCAPE CONTRACTOR TO MAINTAIN ALL PLANT MATERIAL THROUGH DURATION OF JOB AND FINAL ACCEPTANCE.
- ACCEPTANCE: WHEN THE CONTRACTOR HAS FINISHED ALL PLANTING, IRRIGATION AND TRIMMING AND AFTER CLEANUP IS COMPLETE AND ALL PLANTS ARE IN LIVING CONDITION, THERE SHALL BE A MEETING WITH THE OWNER TO DETERMINE IF INDEED, ALL WORK HAS BEEN PERFORMED SATISFACTORILY. IF AND WHEN FOUND SO, THE JOB WILL BE ACCEPTED.
- SUBSTANTIAL COMPLETION (ACCEPTANCE) OF THE WORK FOR THE ENTIRE PROJECT SHALL CONSTITUTE THE BEGINNING OF THE GUARANTEE PERIOD.

GENERAL NOTES:

- BASE INFORMATION INDICATED ON THE DRAWINGS IS APPROXIMATE AND SHALL BE VERIFIED BY THE CONTRACTOR PRIOR TO CONSTRUCTION. CONTRACTOR SHALL NOTIFY OWNER'S REPRESENTATIVE OF ANY DISCREPANCIES BETWEEN THE DRAWINGS AND EXISTING CONDITIONS BEFORE INITIATING INSTALLATION.
- CONTRACTOR SHALL BE RESPONSIBLE FOR ALL EROSION PROTECTION AND SLOPE STABILIZATION BY OWNER APPROVED MEANS.
- CONTRACTOR SHALL MAINTAIN FUNCTIONING UTILITIES, MANHOLES, CATCH BASINS, ETC. IN THE WORK AREA. THE CONTRACTOR SHALL ASSUME FULL RESPONSIBILITY FOR REPAIRS OF UTILITIES AND OTHER IMPROVEMENTS DAMAGED DURING CONSTRUCTION. THE CONTRACTOR SHALL MAINTAIN SUFFICIENT PROTECTION TO ALL UTILITIES, AS REQUIRED, TO PREVENT ANY DAMAGES, AND ALSO TO PROVIDE NECESSARY PUBLIC PROTECTION.
- CONTRACTOR SHALL NOTIFY ALL APPROPRIATE UTILITY COMPANIES OF PROPOSED START OF WORK IN ACCORDANCE WITH THEIR STANDARD REQUIREMENTS, INCLUDING BUT NOT LIMITED TO WATER, SEWER, POWER, TELEPHONE, GAS, & CABLE TV COMPANIES.
- CONTRACTOR SHALL PROTECT ALL EXISTING PAVEMENT, WALLS, RAILING, LANDSCAPE PLANTING, LIGHTING, ETC. TO REMAIN.
- CONTRACTOR SHALL REPAIR ANY AND ALL DAMAGE, WHICH OCCURS FOLLOWING COMMENCEMENT OF WORK UNTIL OWNER'S WRITTEN APPROVAL, TO THE OWNER'S SATISFACTION AT NO COST TO THE OWNER.
- CONTRACTOR SHALL ENSURE POSITIVE DRAINAGE TO ALL DRAINAGE STRUCTURES.
- REFER TO ENGINEERING DRAWINGS FOR ALL UTILITY LOCATIONS, AND VERIFY IN THE FIELD PRIOR TO FINE GRADING AND/OR PLANTING. REFER TO ENGINEERING DRAWINGS FOR GRADING AND SPOT ELEVATIONS. VERIFY IN THE FIELD PRIOR TO CONSTRUCTION.

Artegon
International Drive
Orlando, Florida

Revisions:

No.	Date	Description
1	1/19/2014	Reviewed Toby Keith's patio
2	4/21/2014	Reviewed Toby Keith's patio

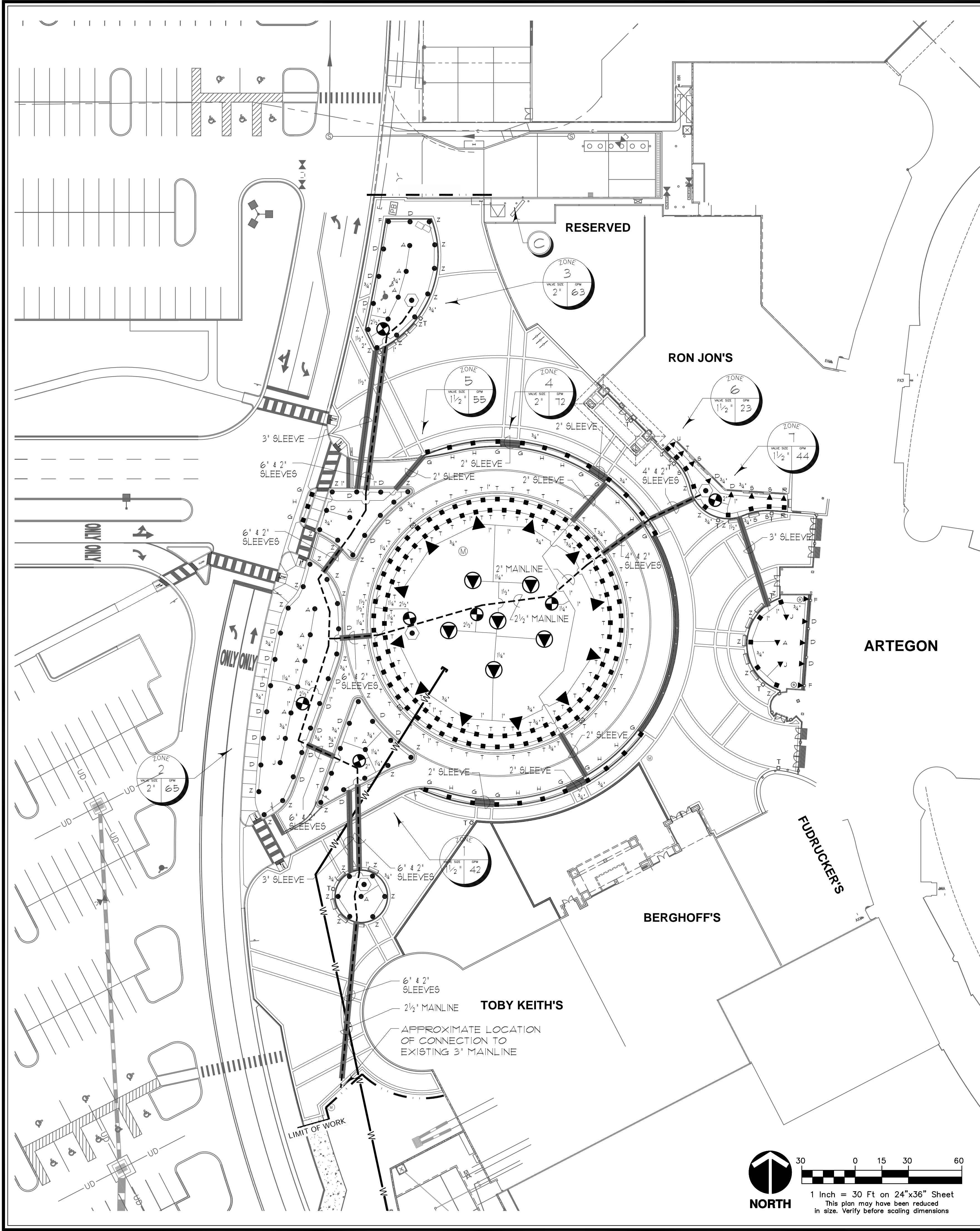
Main Entry
Landscape Details

Scale: 1" = 30'
Date: 2/10/2014
Project No.: 1401

Design: JMI
Drawn: RT
Checked: JMI

PERMIT DOCUMENTS

Release:

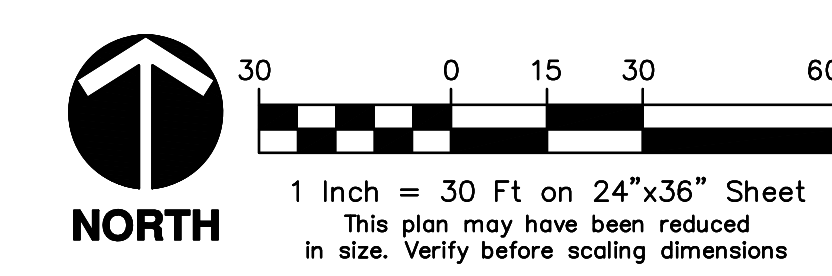
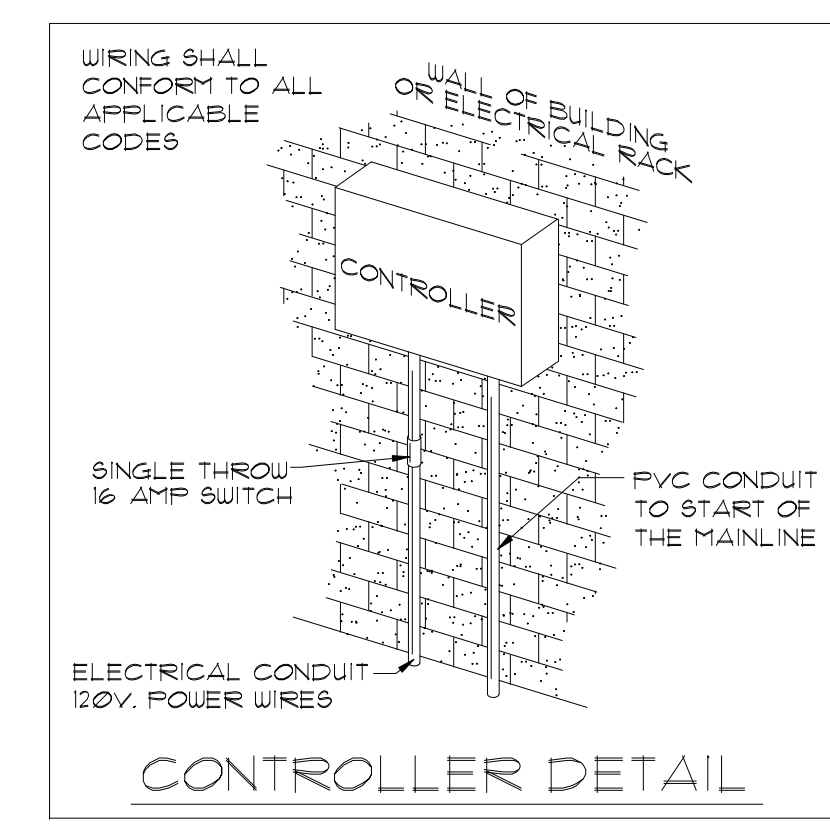
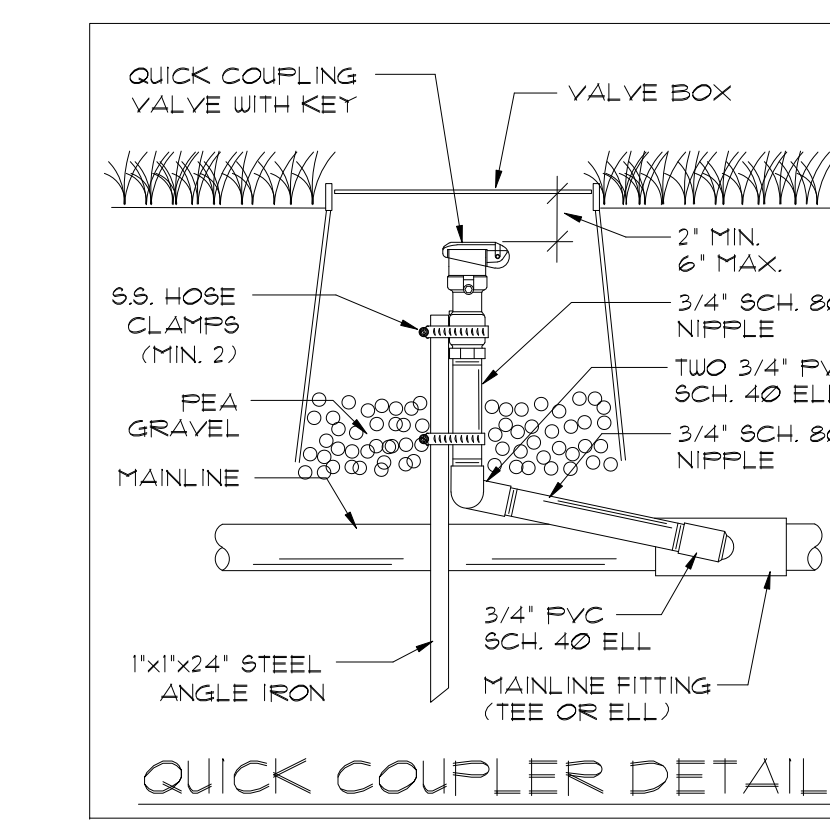
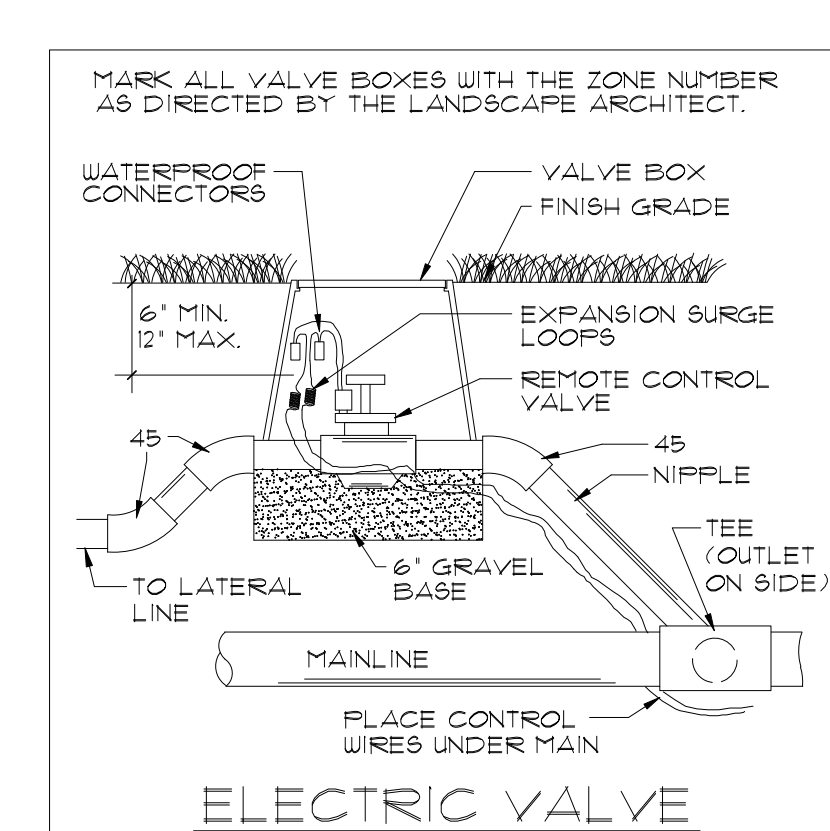
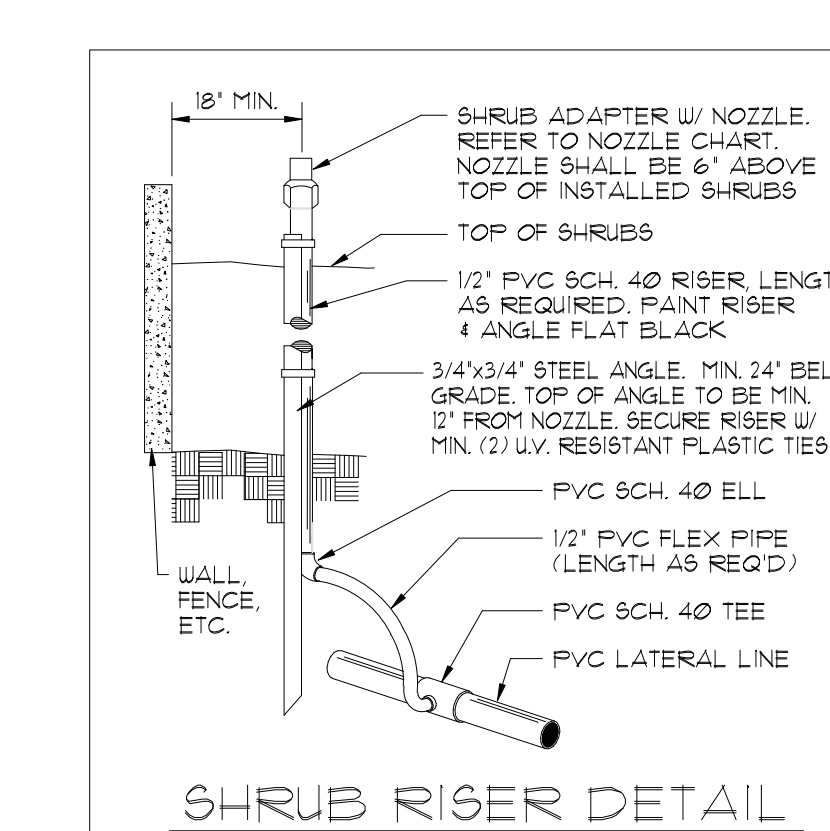
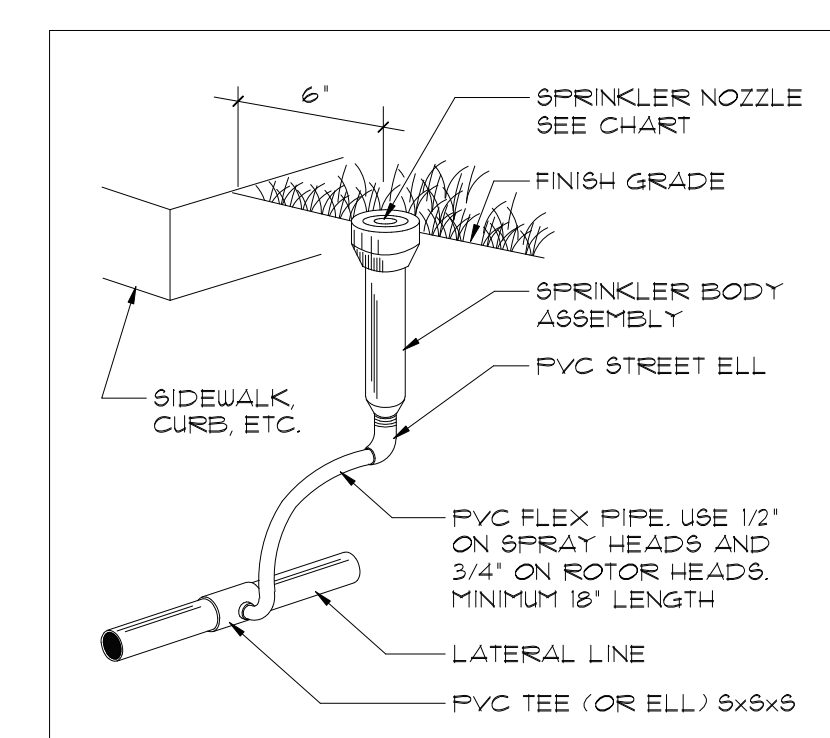


- ### LEGEND
- RAIN BIRD 1806-FRS SERIES 6" POP-UP SPRAY HEAD
 - RAIN BIRD 1802-FRS SERIES 12" POP-UP SPRAY HEAD
 - ▲ RAIN BIRD PA-85-FRS SHRUB SPRAY ON RISER
 - ▼ HUNTER PGP FULL CIRCLE ROTOR HEAD WITH A BLUE PGP 6.0 NOZZLE.
 - ▼ HUNTER PGP-ADJ PART CIRCLE ROTOR HEAD WITH A BLUE PGP 3.0 NOZZLE.
 - RAIN BIRD 33DR QUICK COUPLING VALVE. INSTALL IN AN AMETEK VP-12A VALVE BOX. LOCATE WITHIN LANDSCAPE AREA, 1' FROM HARDSCAPE EDGE. FINAL LOCATION TO BE APPROVED BY OWNER.
 - ⊕ RAIN BIRD PEB SERIES ELECTRIC CONTROL VALVE. SIZE AS SHOWN ON THE PLAN. INSTALL VALVE IN AN AMETEK VP-12A VALVE BOX.
 - CLASS 200 PVC MAINLINE. 2-1/2" OR SIZE AS SHOWN
 - - - CLASS 160 PVC LATERAL LINE. SIZE AS SHOWN UNTIL A SMALLER SIZE IS SHOWN. (3/4" MIN)
 - SCHEDULE 40 PVC SLEEVE. 2" OR SIZE AS SHOWN.
 - ⊙ RAIN BIRD ESP-ALXME MODULAR CONTROLLER. INSTALL WITH A MINI-CLICK II RAIN SENSOR. GROUND WITH A #8 MINIMUM COPPER CLAD ROD. SLEEVE TO AS REQUIRED.

NOZZLE CHART

LETTER	MODEL	GPM AT 30 PSI	RADIUS	PATTERN
A	1800-18F	3.7	15'	FULL
B	1800-18TQ	2.8	15'	THREE QTR
C	1800-18TT	2.5	15'	TWO THIRD
D	1800-18H	1.9	15'	HALF
E	1800-18T	1.2	15'	ONE THIRD
F	1800-18Q	1.0	15'	QUARTER
G	1800-18EST	4.1	4' X 15'	END STRIP
H	1800-18CST	1.2	4' X 30'	CENTER STRIP
J	1800-12F	2.6	12'	LOW GPM FULL
K	1800-10F	1.6	10'	LOW FULL
L	1800-15LRCS	.45	4' X 15'	CORNER END STRIP
M	1800-18SST	1.2	4' X 30'	SIDE STRIP
N	1800-12H	1.2	12'	LOW GPM HALF
O	1800-12Q	.61	12'	LOW GPM QUARTER
P	1800-10T	.52	10'	LOW THIRD
R	1800-10Q	.39	10'	LOW QUARTER
S	1800-10H	.79	10'	LOW HALF
T	1800-8H	.79	8'	FLAT HALF
U	1800-8Q	.39	8'	FLAT QUARTER
V	1800-8T	.52	8'	FLAT THIRD
W	1800-5CST-15	.50	5'	CENTER SUBBLER
X	1800-116-VAN	VARIABLE	3'-6"	4' or 6' VARIABLE
Y	1800-810-VAN	VARIABLE	6'-10"	8' or 10' VARIABLE
Z	1800-15-VAN	VARIABLE	10'-15"	12' or 15' VARIABLE

- ### GENERAL NOTES
- 1) REFER TO THE LANDSCAPE PLANS WHEN TRENCHING TO AVOID TREE AND SHRUB LOCATIONS.
 - 2) ALL MAINLINE PIPING SHALL BE BURIED TO A MINIMUM DEPTH OF 18" OF COVER AND ALL LATERAL PIPING SHALL BE BURIED TO A MINIMUM DEPTH OF 12" OF COVER.
 - 3) ALL POP-UP ROTOR AND SPRAY HEADS SHALL BE INSTALLED USING AN 18" PVC FLEX PIPE CONNECTION. CONTRACTOR SHALL NOT USE FLANTY PIPE.
 - 4) PIPE SIZES SHALL CONFORM TO THOSE SHOWN ON THE DRAWINGS. THE SMALLEST LATERAL PIPE SIZE TO A SINGLE SPRAY OR ROTOR HEAD SHALL BE 3/4".
 - 5) ALL REMOTE CONTROL VALVES, GATE VALVES AND QUICK COUPLERS SHALL BE INSTALLED IN VALVE BOXES.
 - 6) ALL RISERS SHALL BE STAKED WITH A STEEL ANGLE AND SECURED WITH UV RESISTANT PLASTIC CABLE TIES. RISERS AND ANGLE SHALL BE PAINTED FLAT BLACK.
 - 7) ALL RISERS SHALL BE INSTALLED 12" FROM ANY WALL AND A MINIMUM OF 36" FROM ANY SIDEWALK, PATIO OR ROAD.
 - 8) THE EXACT HEIGHT OF ANY 12" POP-UP THAT IS SHOWN IN A SHRUB BED SHALL BE DETERMINED BY THE LANDSCAPE ARCHITECT IN THE FIELD.
 - 9) CONTROL WIRE SHALL BE 14-1 UF DIRECT BURIAL, COLORED RED FOR CONTROL WIRES AND WHITE FOR COMMON WIRES (UNLESS OTHERWISE INDICATED IN THE SPECIFICATIONS). NO CROSS CONNECTION BETWEEN CONTROLLERS SHALL BE ALLOWED. WIRE SPLICES SHALL BE MADE ONLY IN VALVE BOXES USING KING 'ONE-STEP' CONNECTORS AND SEALANT.
 - 10) ANY PIPING OR VALVES SHOWN OUTSIDE THE PROPERTY LINE OR OUTSIDE OF A LANDSCAPE AREA IS SHOWN THERE FOR DESIGN CLARITY ONLY. ALL PIPING AND VALVES SHALL BE INSTALLED ON THE PROPERTY AND WITHIN LANDSCAPE AREAS.
 - 11) IT IS THE RESPONSIBILITY OF THE IRRIGATION CONTRACTOR TO FAMILIARIZE HIMSELF WITH LAND AND EXERCISE CARE SO AS TO NOT DAMAGE ANY EXISTING BERMS, WALLS, STRUCTURES, PLANT MATERIALS AND UTILITIES. THE IRRIGATION CONTRACTOR SHALL BE RESPONSIBLE FOR THE IMMEDIATE REPAIR OR REPLACEMENT OF ALL ITEMS DAMAGED BY HIS WORK. HE SHALL COORDINATE HIS WORK WITH OTHER CONTRACTORS FOR THE LOCATION AND INSTALLATION OF SLEEVES AND PIPING THROUGH WALLS, UNDER ROADWAYS AND PAVING, ETC.
 - 12) DO NOT WILLFULLY INSTALL THE SPRINKLER SYSTEM AS SHOWN ON THE DRAWINGS WHEN IT IS OBVIOUS IN THE FIELD THAT UNKNOWN OBSTRUCTIONS, GRADE DIFFERENCES OR DIFFERENCES IN AREA DIMENSIONS EXIST THAT MIGHT NOT HAVE BEEN CONSIDERED IN THE ENGINEERING. SUCH OBSTRUCTIONS OR DIFFERENCES SHOULD BE BROUGHT TO THE ATTENTION OF THE OWNER'S AUTHORIZED REPRESENTATIVE. IN THE EVENT THIS NOTIFICATION IS NOT PERFORMED, THE IRRIGATION CONTRACTOR SHALL ASSUME FULL RESPONSIBILITY FOR ANY REVISIONS.
 - 13) FINAL LOCATION OF THE AUTOMATIC CONTROLLER(S) SHALL BE APPROVED BY THE OWNER'S AUTHORIZED REPRESENTATIVE PRIOR TO INSTALLATION.
 - 14) ELECTRICAL SERVICE TO ALL EQUIPMENT SHALL BE PROVIDED TO A JUNCTION BOX AT THE EQUIPMENT LOCATION (BY OTHERS NOT A PART OF THIS CONTRACT) THE IRRIGATION CONTRACTOR SHALL BE RESPONSIBLE FOR THE FINAL CONNECTION FROM THE JUNCTION BOX TO ALL EQUIPMENT.
 - 15) THE IRRIGATION CONTRACTOR SHALL FLUSH AND ADJUST ALL SPRINKLER HEADS AND VALVES TO PROVIDE OPTIMUM COVERAGE WITH MINIMAL OVERLAP ONTO WALKWAYS, STREETS, WALLS, ETC. IN ORDER TO ACCOMPLISH THIS, THE CONTRACTOR MAY SUBSTITUTE VARIABLE ARC NOZZLES IN PLACE OF THE SPECIFIED FIXED ARC NOZZLES WHERE NECESSARY. PRESSURE COMPENSATING SCREENS MAY ALSO BE USED TO REDUCE SPRAY DISTANCE.
 - 16) THE CONTRACTOR SHALL COMPLETE ALL WORK IN ACCORDANCE WITH ALL PREVAILING LAWS, CODES AND REGULATIONS.
 - 17) ALL SPRINKLER EQUIPMENT NOT OTHERWISE DETAILED OR SPECIFIED SHALL BE INSTALLED AS PER MANUFACTURER'S RECOMMENDATIONS AND SPECIFICATIONS.
 - 18) THE CONTRACTOR SHALL PREPARE AN AS-BUILT DRAWING IN AUTOCAD FORMAT SHOWING ALL IRRIGATION INSTALLATION. A DIG FILE OF THE ORIGINAL PLAN MAY BE OBTAINED FROM THE LANDSCAPE ARCHITECT FOR A FEE. THE AS-BUILT DRAWING SHALL LOCATE ALL MAINLINE AND VALVES BY SHOWING EXACT MEASUREMENTS FROM HARD SURFACES.
 - 19) ALL WORK SHALL BE GUARANTEED FOR ONE YEAR FROM THE DATE OF FINAL ACCEPTANCE AGAINST ALL DEFECTS IN EQUIPMENT AND WORKMANSHIP.



HARRIS
Harris Civil Engineers, LLC

1200 E. Hillcrest Street
Suite 200
Orlando, Florida 32803

Phone: (407) 629-4777
(800) 595-8185
Fax: (407) 629-7888

www.harrisengineers.com
EB 9814

AD
Agora Design
LANDSCAPE ARCHITECTURE + PLANNING
THEMING DESIGN + GRAPHIC DESIGN
640 South Hampton Avenue • Orlando, Florida 32803
(407) 898-3645 • LA #752

kolbert
Irrigation
Design
5705 W. Franklin Street
Richmond, VA 23226
(804) 363-1381

Artegon
International Drive
Orlando, Florida

Revisions:

No.	Date	Description
9		
8		
7		
6		
5		
4		
3	4/21/2014	Revised Toby Keith's patio
2	1/19/2014	Revised for City comments
1		

Design: WK
Drawn: WK
Checked: JM

Scale: 1"=30'
Date: 2/10/2014
Project No.: 1401

Release:

IR-1

PERMIT DOCUMENTS